



COMMUNITY & TECHNICAL
COLLEGES:
AGENTS OF CHANGE

10TH ANNUAL
CONFERENCE
2013

CONFERENCE PROGRAM

March 13-15
Baton Rouge River Center ★ Baton Rouge, Louisiana

PRESENTED BY:



Avondale

A Subsidiary of Huntington Ingalls Industries

The LCTCS Annual Conference is supported by professional development funds from the Carl D. Perkins Career and Technical Education Act Federal Grant. Additional resources are provided by sponsors and exhibitors through the LCTCS Foundation.

THERE'S NEW ENERGY AT AVONDALE.



Applying World-Class Engineering and Modular Construction Services to the Energy Market

At Avondale, our highly skilled workforce is energized and set to deliver innovative modular solutions for upstream, midstream and downstream energy infrastructures. Backed by our vast facilities, unmatched capabilities, and 75-year legacy of success, we're harnessing our energy to build solutions today that will advance performance for years to come.

Visit us at www.hii-avondale.com



Avondale

A Subsidiary of Huntington Ingalls Industries

President's Welcome



Greetings,

Welcome to the 10th Annual LCTCS Conference. I am proud of the fact that our system is the only one in Louisiana that brings faculty and staff together from all over the state for professional development. This is a unique and important opportunity for all of us as we work to meet the needs of students, communities and employers in new and innovative ways. Our conference is the perfect place for us to come together and share best practices in workforce development, academic and student affairs, outreach and public affairs, and a variety of other areas in order to ensure that we get better at what we do year after year.

I am excited about this year's theme, "Community and Technical Colleges – Agents of Change" because it represents not only what is happening throughout our system – change! – but also what each of you bring to our colleges, our communities, and our students. Change is not just what happens to us – it is what we bring to the table. We have planned a program that we hope will empower you to embrace your inner "Agent of Change" in a whole new way.

In addition to thinking about change, we want to focus on connecting. Last year we launched the "Peer Group Initiative" and we will follow up on that this year. At the end of Thursday's programming, all faculty will meet within their disciplines to develop networking and professional development opportunities state-wide in the coming year. Check the program to see where your peer group will meet and don't miss out on the opportunity to connect with your colleagues from across the state.

I am pleased to welcome some very exciting keynote speakers to this year's conference. We have the honor of welcoming a distinguished, higher education leader, Dr. Van Ton-Quinlivan, Vice Chancellor of Workforce and Economic Development of California's Community Colleges. We also have the pleasure of hearing from an inspirational speaker on embracing change, Simon T. Bailey, President, The Brilliance Institute. I am grateful for their high-quality addition to our conference program.

Finally, the highlight of every conference is our Awards Luncheon on Friday where we will honor our outstanding faculty, staff and administrators. It is important to honor the very best at all of our colleges. Don't miss this opportunity to celebrate your colleagues.

Please enjoy the conference and leave inspired to be a "Change Agent" in your college and your community in the coming year.

A handwritten signature in black ink that reads "Joe D. May". The signature is written in a cursive, flowing style.

Joe D. May
System President
@Drjoemay



Board of Supervisors

Mr. E. Edwards Barham – Oak Ridge, LA

Mr. Paul Price, Jr. – Winnsboro, LA

Mr. Robert Brown – New Orleans, LA

Mr. Stephen C. Smith – Schriever, LA

Mrs. Helen Bridges Carter – Greensburg, LA

Mr. Vincent St. Blanc III, Immediate Past Chair
– Franklin, LA

Mr. Keith Gamble - Shreveport, LA

Mr. F. Mike Stone – New Orleans, LA

Ms. Deni Grissette – Sunset, LA

Mr. Scott Terrill – Bossier City, LA

Mr. Timothy W. Hardy, 2nd Vice Chair
– Baton Rouge, LA

Mr. Stephen Toups – Baton Rouge, LA

Mr. Brett J. Mellington – Lafayette, LA

Ms. Adrianna Garcia, Student –
Technical College Student Representative

Mr. Michael J. Murphy, Chair –
Bogalusa, LA

Mr. Jimmy Douglas, Student –

Mr. Woody Ogé, 1st Vice Chair -
New Orleans, LA

Community College Student Representative



Community College Chancellors

Baton Rouge Community College,
Dr. Andrea Lewis Miller, Chancellor

Northshore Technical Community College,
Dr. William Wainwright, Chancellor

Bossier Parish Community College,
Dr. James Henderson, Chancellor

River Parishes Community College,
Dr. Joe Ben Welch, Chancellor

Central Louisiana Technical Community College,
Dr. Rodney Ellis, Chancellor

South Louisiana Community College,
Dr. Natalie Harder, Chancellor

Delgado Community College,
Dr. Monty Sullivan, Chancellor

L.E. Fletcher Technical Community College,
Mr. Travis Lavigne, Chancellor

Elaine P. Nunez Community College,
Dr. Thomas Warner, Chancellor

SOWELA Technical Community College,
Dr. Neil Aspinwall, Chancellor

Louisiana Delta Community College,
Dr. Barbara Hanson, Chancellor



Technical College Directors

Capital Area Technical College,
Dr. Kay McDaniel, Director

South Central Louisiana Technical College,
Mr. Earl Meador, Director

Northwest Louisiana Technical College,
Mr. Charles Strong, Director

Follow Our Colleges



The Louisiana Community & Technical College System is comprised of fourteen colleges serving the workforce needs of Louisiana.

Baton Rouge Community College (@MyBRCC)
Bossier Parish Community College (@BPCCcavs)
Capital Area Technical College (@CATCbr)
Central Louisiana Technical Community College (@CenLATechColl)
Delgado Community College (@DelgadoCC)
Fletcher Technical Community College (@FletcherCollege)
Nunez Community College (@Nunez_CC)
Louisiana Delta Community College (@LADeltaCC)

Northwest Louisiana Technical College (@Northwest_LTC)
Northshore Technical Community College (@NTCC_NTCC)
River Parishes Community College (@RiverParishesCC)
South Central Louisiana Technical College (@SCL_TC)
South Louisiana Community College (@southlacc)
SOWELA Technical Community College (@SowelaTCC)



Keynote Speaker
Grand Opening Plenary Session
Wednesday, March 13 – 5:00 P.M.

Dr. Van Ton-Quinlivan

*Vice Chancellor of Workforce and Economic Development of California's
Community Colleges*

@workforcevan #LCTCSKeynote

Van Ton-Quinlivan is Vice Chancellor of Workforce and Economic Development of California's Community Colleges. This Division administers state and federal funding applied to the career education mission across the system's 112 community colleges. Appointed by Governor Jerry Brown in 2011, her leadership focus is on Doing What Matters for Jobs and the Economy.

Ton-Quinlivan came to this position as a recognized thought leader in the energy and utility industry on the issue of workforce development. While Director of Workforce Development at Pacific Gas & Electric (PG&E), Ton-Quinlivan architected PowerPathway™, a nationally recognized best practice model program in workforce development. PowerPathway demonstrated the type of collaboration between industry, the public workforce system, education, and organized labor that effectively transitions military veterans and members of underserved communities into energy sector jobs.

Ton-Quinlivan was selected as one of ten industry leaders invited to inform the Education and Training Subcommittee of President Obama's Economic Recovery Advisory Board (PERAB) on the workforce needs of industry, and was one of five corporate leaders invited to attend the first-ever White House Community College Summit which focused on increasing the credentialing of the nation's workforce. Ton-Quinlivan spoke at the inaugural US-Canada-European Commission Trilateral Roundtable on the topic of the Employment Dimension of the Transition to a Green Economy and participated in the first-ever Clinton Global Initiative-America.

Ton-Quinlivan is on the board of the National Skills Coalition and the Campaign for College Opportunities, serves on the Corporate Voices for Working Families' Community College Advisory Board, and is a member of the International Women's Forum. In addition, she represents the California Community College Chancellor's Office on the California Workforce Investment Board and California Apprenticeship Council.



Keynote Speaker General Plenary Session Thursday, March 14 – 9:15 A.M.

Simon T. Bailey
President of the Brilliance Institute
@simonsaysshift #LCTCSPlenary

Simon T. Bailey is a compelling thought catalyst. Organizations around the world recognize him as a high-impact business thinker who keenly understands the needs of his audiences, and individuals from around the world look to him for personal mentoring.

Always solutions-oriented, Simon challenges everyone to find and ignite the spark of brilliance they carry inside and then provides the tools needed to get radiant results. Simon has carried his message to more than one million people with a dynamic style that has earned him accolades as one of the top 25 speakers shaping his profession. Meetings and Conventions magazine cited him as “One of the best keynote speakers ever heard or used,” putting him in the same category as Bill Gates, General Colin Powell and Tony Robbins.

He is also a leader of learning, inspiring thousands of readers with his breakout masterpiece, *Release Your Brilliance*, published by HarperCollins. It was ranked number 17 of the Top 100 books being read by Corporate America, according to 800CEOREAD.com. His highly anticipated new book, *The Vujá dé Moment! Shift from Average to Brilliant* (pronounced voo-ja-day), invites readers to shift their thinking, creating a disruption from the norm that ignites creativity, drives productivity and increases accountability.

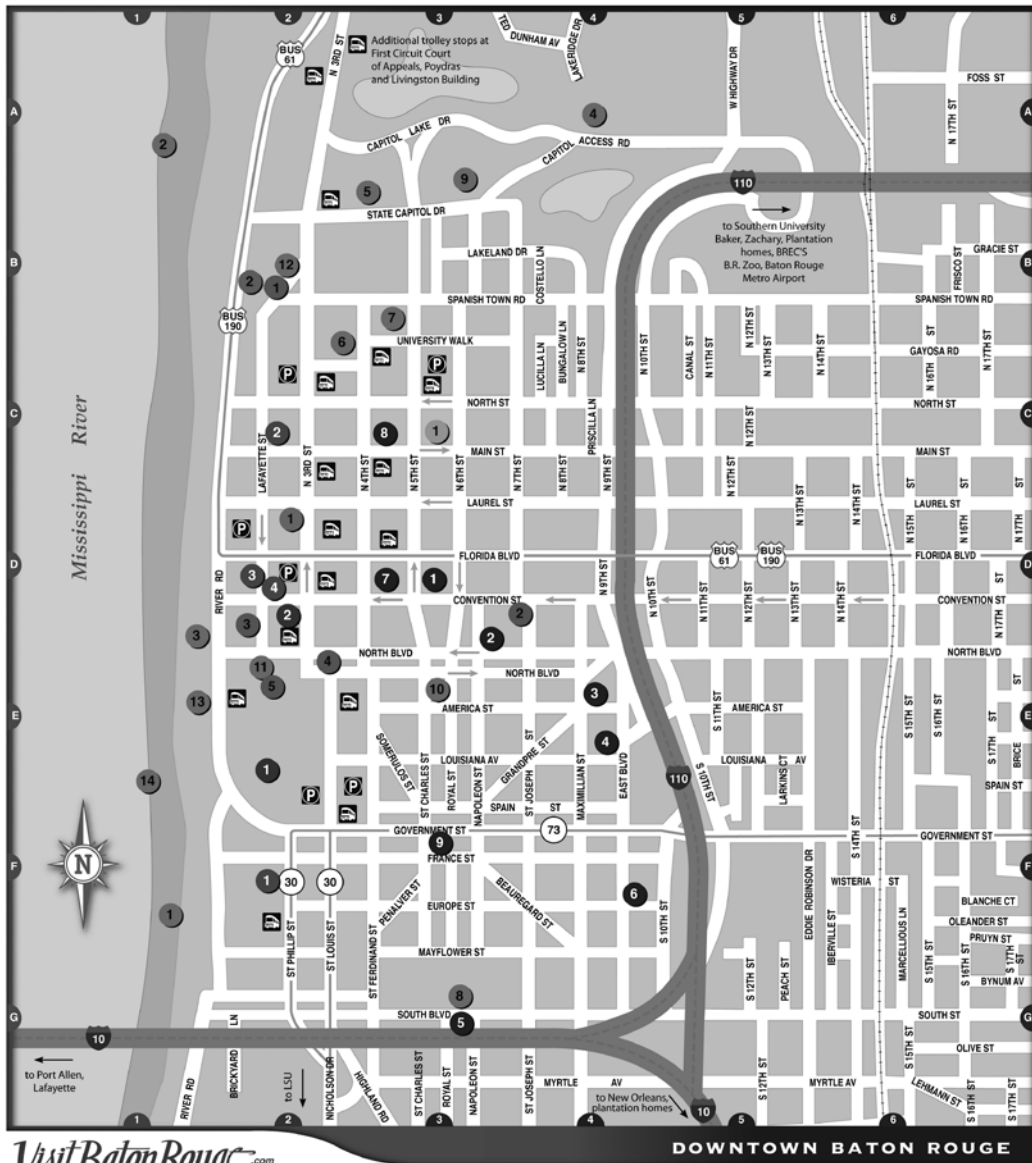
In 2003, Simon’s passion to help others shift from average to brilliant led to the creation of the Brilliance Institute, a consulting firm that has successfully worked with more than 400 Fortune 1000 companies—driving productivity, increasing accountability, sparking creativity, and winning the race to innovation. Simon solidified his position as a recognized leader in experiential training for business professionals across the globe during his leadership tenure at the world-renowned Disney Institute. This is where he discovered his own magic and entrepreneurial spark and started his own business.

Simon is a graduate of Executive Management Program at Rollins College, one of the top 25 best private graduate business schools in the USA. He holds a Master’s Degree from Faith Christian University and was inducted as an honorary member of the University of Central Florida Golden Key International Honor Society. Simon is a Certified Speaking Professional, the highest earned designation from the National Speakers Association and International Federation of Professional Speakers.

Simon resides in Orlando, Florida where he enjoys spending time with his wife, Renee, and their children - Daniel, Madison, and their dog - Max, their teacup Maltese.

Simon’s vision is to inspire 10% of the 7 Billion on the planet to release their brilliance and create the future.

Downtown Baton Rouge



**Hilton Baton Rouge
Capitol Center**
201 Lafayette St.
Baton Rouge, LA 70801
225-344-5866

**Belle of Baton Rouge
Hotel**
103 France St.
Baton Rouge, LA 70801
1.800.266.2692

Hotel INDIGO
200 Convention St.
Baton Rouge, LA 70801
225.343.1515

VisitBatonRouge.com

OFFICIAL TRAVEL RESOURCE

Download our free mobile app and start exploring Baton Rouge in a new way! Or, log onto our mobile site at www.visitbatonrouge.com.



ACCOMMODATIONS

- 1 Belle of Baton Rouge Casino & Hotel (F-2)
- 2 Hampton Inn & Suites Downtown (C-2)
- 3 Hilton Baton Rouge Capitol Center (D-2)
- 4 Hotel Indigo (D-2)

ATTRACTIONS & LANDMARKS

- 1 Belle of Baton Rouge Casino (F-1)
- 2 Hollywood Casino Baton Rouge (A-1)
- 3 Louisiana Art & Science Museum / Irene W. Pennington Planetarium (D-1)
- 4 Louisiana Governor's Mansion (A-4)
- 5 Louisiana State Capitol - Visitor Information Center (A-2)
- 6 Louisiana State Library (B-2)

- 7 Capital Park Museum, A Louisiana State Museum (B-3)
- 8 Odell S. Williams Now & Then African-American Museum (G-3)
- 9 Old Arsenal Museum (A-3)
- 10 Old Governor's Mansion and Museum (E-3)
- 11 Old State Capitol (E-2)
- 12 Pentagon Barracks (B-2)
- 13 Riverfront - Red Stick Plaza / Public Dock (E-1)
- 14 USS Kidd DD-661 Louisiana Veterans Memorial and Museum (E-1)

INFORMATION

- 1 Visit Baton Rouge (D-2)
- 2 Capitol Park Welcome Center (B-2)

PARKS

- 1 AZ Young Park (B-2)
- 2 BREC's Convention Street Park (D-3)
- 3 Lafayette Park (D-2)
- 4 North Blvd Town Square (D-2)
- 5 Repentance Park (E-2)

PLACES OF WORSHIP

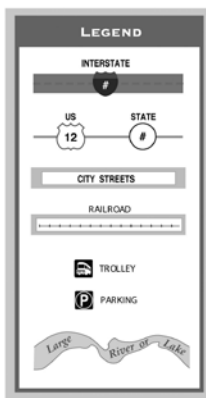
- 1 First Baptist Church (D-3)
- 2 First Presbyterian Church (D-3)
- 3 First United Methodist Church (E-4)
- 4 Mt. Zion First Baptist (E-4)
- 5 New Saint Luke Baptist (G-3)
- 6 St. Agnes Catholic (F-4)
- 7 St. James Episcopal Church (D-3)
- 8 St. Joseph Cathedral (C-3)
- 9 Wesley United Methodist (F-3)

SHOPPING

- 1 Main Street Market (C-3)

THEATER/GALLERY

- 1 Baton Rouge River Center and Performing Arts Theater (E-2)
- 2 Shaw Center for the Arts / LSU Museum of Art (D-2)



©2012 Visit Baton Rouge

1 - 800 - LA - ROUGE • www.visitbatonrouge.com



Proud to partner with the LCTCS to advance world-class Education and Workforce Development throughout Louisiana.

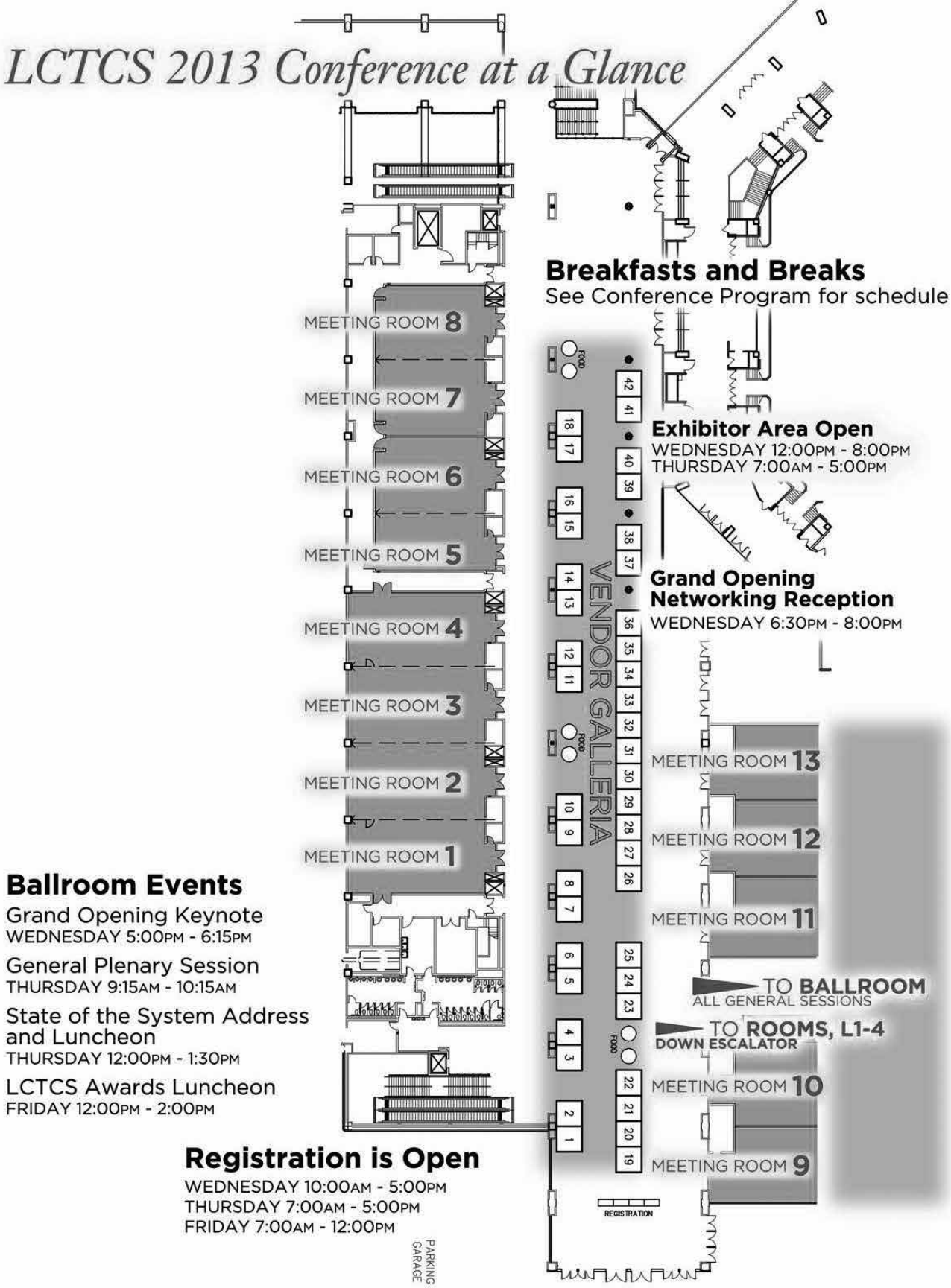
FINANCIAL AND DEVELOPMENT SERVICES COMPANIES

- Sisung Securities Corporation ■ Sisung Film Finance ■ United Professionals Company
Sisung Investment Management Services ■ Sisung Capital

Baton Rouge River Center

275 S. River Road
 (225) 389-3030
 www.brrivercenter.com

LCTCS 2013 Conference at a Glance



Breakfasts and Breaks
 See Conference Program for schedule

Exhibitor Area Open
 WEDNESDAY 12:00PM - 8:00PM
 THURSDAY 7:00AM - 5:00PM

Grand Opening Networking Reception
 WEDNESDAY 6:30PM - 8:00PM

Ballroom Events
 Grand Opening Keynote
 WEDNESDAY 5:00PM - 6:15PM
 General Plenary Session
 THURSDAY 9:15AM - 10:15AM
 State of the System Address and Luncheon
 THURSDAY 12:00PM - 1:30PM
 LCTCS Awards Luncheon
 FRIDAY 12:00PM - 2:00PM

Registration is Open
 WEDNESDAY 10:00AM - 5:00PM
 THURSDAY 7:00AM - 5:00PM
 FRIDAY 7:00AM - 12:00PM

For more information, follow @golctcs #LCTCSChangeAgent

General Information

Focus Areas

Changing Colleges – Changing Students: Innovation in Student Engagement

At the very core of their mission, our colleges are teaching and learning institutions. This track provides an opportunity for faculty and staff to showcase the best practices of teaching, learning, and student engagement as well as a focus on alternatives to lecture-based classes. Designed to engage a broader cross-section of faculty, this track is primarily focused on instructional strategies and methods that have demonstrated value in teaching and learning. Additionally, sessions relating to improving student engagement outside the classroom are strongly encouraged.

Change Agents for Adult Learners: From Successful College Preparation to the Credential

The skills gap in Louisiana is a priority. One substantial part of the skills gap is the more than 600,000 persons of working age in the state who have less than a high school diploma. As community and technical colleges have taken on responsibility for moving more adults through to completion of a college credential, our colleges have become the source of innovation in developing capacity to better serve this population. This track provides an opportunity for colleges and adult education providers to feature some of the best practices in moving adult students through to credential completion including such subjects as addressing the needs of adult learners, integrated instruction (adult education and career and technical education), etc.

Agents for the Changing Learning Environment: Online and Beyond

The classroom environment is central to student achievement. Innovative classroom strategies that engage students can impact student success and retention. These classroom strategies draw from student development theory combined with the use of technology to create an environment where student achievement is the focus. Included in this environment is the integration of technology with teaching. The purpose of the online teaching and learning focus is to expand opportunities for training, degrees and certifications using computers, Internet and mobile technology to deliver programming anytime, anyplace, by any person, at any pace, on any path and to any device through statewide collaboration.

Making the Case in Changing Times: Gathering Support to Accomplish Our Mission

It is no secret that funding sources for higher education are strained today like never before. Success in delivering on the mission to our students is dependent on the effective use of existing resources and the execution of innovative strategies to tap new sources of funding. The ability to develop and access new funding streams, whether grants, workforce training contracts and partnerships, or fundraising strategies and private philanthropy - will be the hallmarks of the successful community and technical college of today and tomorrow. In addition, the ability to make the most efficient use of resources will also be vital to colleges in this new economic reality.

Agents of Change in the Community: Aligning Program Offerings with Area Workforce Needs

Community and technical colleges have assumed the lead in creation of a strong and vital workforce for the state. While our colleges have made progress, a substantial skills gap remains in Louisiana. This track provides an opportunity to feature some of the best practices of workforce development professionals in the field. Sessions relating to using analytical tools to identify workforce shortages, innovative programs that are meeting workforce demands, and key relationships with business and industry are encouraged.

Changing Lives: College Steps to Retention and Enrollment Management

Community and technical colleges have experienced tremendous enrollment growth over the last decade. As we focus on the next decade, there will be a renewed emphasis on enrollment management efforts to ensure greater access for our students. This track provides an opportunity to feature some of the best practices in the field relating to admissions/recruitment, capitalizing on social media interactions with students, improving conversion of admitted to enrolled students, improving the financial aid delivery system, retention strategies, improving student success, etc.

Agents of Change in Student's Lives: New Models for Student Services

Every day, students enter our college with competing priorities. It is an essential part of the community college mission to provide services that assist our students in reaching their potential and achieving academic success. As the needs of college students have evolved it is important that our colleges' services and programs continue to expand and change to meet the needs of our students. Using technology, including the new Banner System can help colleges touch more students, more frequently, using mediums familiar to today's students. Student Affairs can continue to meet the needs of students by evaluating many areas of the college including: Career Services, Counseling Services, Student Activities and Programs, Career Services, Disability Accommodations, Veteran's Services to name a few.

Empowering the Agents of Change: Leadership, Professional Development, and Personal Enrichment

Community and technical colleges support the leadership and professional development of its employees to energize and enhance our mission and grow our leaders. Proposals on topics that lead to personal enrichment and professional growth are invited. Topics may include: health and wellness, career advancement, retirement planning, stress/time management, and administrative/management skill development, faculty/staff/leadership development, financial management, etc.

General Information

Parking and Transportation

Parking is available on the street and pay meters as well as West and East event parking garages on St. Louis Street, between Government St. and North Blvd. (rates below):

Less than 1 hour: \$1.00

1-2 hours: \$2.00

3+ hours: \$5.00

All day: \$5.00

Emergency Numbers

Emergency

Police, Fire & Medical Emergencies – 911

Baton Rouge City Police (Non Emergency) – 225-389-2000

Baton Rouge Sheriff's Department – 225-389-5000

Baton Rouge General Hospital – 225-763-4000

Our Lady of the Lake Regional Medical Center – 225-765-6565

Hilton Baton Rouge Capitol Center – 225-344-5866

§ 201 Lafayette Street


Hotel INDIGO – 255-343-1515

§ 200 Convention Street

Belle of Baton Rouge Hotel – 225-378-6000

§ 103 France Street

Visit Baton Rouge – 800-LA-ROUGE (383-1825)



**Getting to the top
can be a challenge...**

CSRS is proud to be an **AGENT OF CHANGE**, delivering lifelong learning environments for LCTCS future generations. With every educational facilities program we manage, CSRS considers the overall influence a well designed facility has on each student.



CSRS
IMAGINE SHAPE DELIVER

CONTACT: CHRISTOPHER J. PELLEGRIN, AIA

6767 Perkins Road, Suite 200 Phone. (225) 769-0546
Baton Rouge, Louisiana 70808 Email. pellegrin@csrsonline.com

WWW.CSRSONLINE.COM

WEDNESDAY, MARCH 13

AGENDA "At a Glance"

8:00AM-12:00PM	Vendor Galleria	Exhibitor Set-up
8:00AM-5:00PM	Galleria	Registration Open, <i>Sponsored by Higher One</i>
9:00AM - 4:30PM	Meeting Rooms 1 - 13, L1-L4	SPECIAL SESSIONS - PRE-REGISTRATION REQUIRED
9:00AM-3:00PM	Meeting Room 2	ICD10
9:00AM-4:00PM	Meeting Room 6	Banner Training – Human Resources/ Payroll Refresher
9:00AM-4:00PM	Meeting Room 12-13	Carl Perkins State Plan and EDGAR Training
9:00AM-4:00PM	Meeting Room 10	Title IX
8:30AM - 11:00AM	Vendor Galleria	A.M. Refreshment Break, <i>Sponsored by Global Data Systems</i>
12:00PM-4:00PM	Lower Level, Room L3&4	WorkReady U Luncheon and Pre-Conference Session
1:00PM - 3:00PM	Lower Level, Room L2	WorkReady U, Accelerating Opportunity: A Breaking Through Initiative
3:00PM-4:30 PM	Meeting Room 11	Peer Group Leaders Session
9:00AM - 4:30PM	Meeting Rooms 1-13	PRE-CONFERENCE SESSIONS - OPEN TO ALL
9:00AM-4:00PM	Meeting Room 5	Mini-Salzburg Global Seminar
9:00AM-12:00PM	Meeting Room 7	Banner Training – Population Selection
9:00AM-4:00PM	Meeting Room 9	Disability Services
12:00 PM -8:00PM	Vendor Galleria	Exhibitor Area is Open, Cyber Café Open
1:00PM-4:00PM	Meeting Room 7	Grad ACT Reporting
2:00PM - 3:00PM	Vendor Galleria	P.M. Refreshment Break, <i>Sponsored by Global Data Systems</i>
2:00PM-4:00PM	Meeting Room 1	Career & Job Placement Services Pre-Conference Session
5:00PM-6:30PM	Ballroom	Grand Opening Plenary Session and Keynote Address Van Ton-Quinlivan, Vice Chancellor for Workforce & Economic Development, California Community Colleges, <i>Sponsored by NCCER Build Your Future</i>
6:30PM -8:00PM	Vendor Galleria	Grand Opening Networking Session and Reception <i>Sponsored by NEEBO</i>

THURSDAY, MARCH 14

6:30AM - 7:15AM	Registration Desk	Downtown Walk/Jog <i>Lead by Exerfit's head trainer, Sarah Mary Toce</i>
7:00AM-5:00PM	Galleria	Registration Open, <i>Sponsored by Higher One</i>
7:00AM-8:00AM	Vendor Galleria	Browsing Breakfast, <i>Sponsored by National Student Clearinghouse</i>
7:00AM-5:00PM	Vendor Galleria	Cyber Café & Ethics Training <i>Sponsored by AT&T</i> Exhibits open until 5:00PM Prize Drawing at 5:00PM

THURSDAY, MARCH 14

AGENDA “At a Glance”

7:30AM-8:30AM	Meeting Room 13	Leader’s Meeting: Chief Academic Officers, Chief Student Affairs Officers, Workforce and Institutional Research
8:00AM-9:00AM	Meeting Rooms 1-13, L1-L4 (See Conference Agenda for Details)	BREAKOUT SESSIONS
9:15AM-10:15AM	Ballroom	General Plenary Session Simon T. Bailey, Founder, Brilliance Institute <i>Sponsored by Louisiana’s Community and Technical Colleges’ Chancellors and Regional Directors</i>
10:15AM - 12:00PM	Meeting Rooms L3-L4	Chief Financial Officers Meeting
10:15AM-10:45AM	Vendor Galleria	A.M. Refreshment Break , <i>Sponsored by Cengage</i>
10:45AM-11:45AM	Meeting Rooms 1-13, L1-L4 (See Conference Agenda for Details)	BREAKOUT SESSIONS
12:00PM-1:30PM	Ballroom	State of the System Address and Luncheon – Dr. Joe May, President of the Louisiana Community and Technical College System (LCTCS), <i>Sponsored by CSRS</i>
1:45PM-2:45PM	Meeting Rooms 1-13, L1-L4 (See Conference Agenda for Details)	BREAKOUT SESSIONS
2:45 -3:15PM	Vendor Galleria	P.M. Refreshment Break , <i>Sponsored by Cisco Systems</i>
3:15PM-4:15PM	Meeting Rooms 1-13, L1-L4 (See Conference Agenda for Details)	BREAKOUT SESSIONS
4:20PM-5:00PM	Meeting Rooms 1-13, L1-L4	Peer Group Session, <i>Sponsored by Ambassador Education Solutions</i>
5:00PM-5:30PM	Vendor Galleria	Exhibit Hall closes—Prize Drawings!
5:30PM-7:00PM	Louisiana Art & Science Museum	President’s Networking Session and Reception (Invitation Only) <i>Sponsored by Sisung Group</i>

ENJOY A NICE DINNER WITH A GROUP ON YOUR OWN!

FRIDAY, MARCH 15

7:00AM-12:00PM	Galleria	Registration Open , <i>Sponsored by Higher One</i>
7:00AM-8:00AM	Vendor Galleria	Browsing Breakfast , <i>Sponsored by Breazeale, Sachse and Wilson, LLP</i>
8:00AM-9:00AM	Meeting Rooms 1-13 <i>(See Conference Agenda for Details)</i>	BREAKOUT SESSIONS
9:15AM- 10:15AM	Meeting Rooms 1-13 <i>(See Conference Agenda for Details)</i>	BREAKOUT SESSIONS
10:15AM-10:30AM	Vendor Galleria	A.M. Refreshment Break , <i>Sponsored by Jones Walker</i>
10:30AM -11:30AM	Meeting Rooms 1-13 <i>(See Conference Agenda for Details)</i>	BREAKOUT SESSIONS
12:00PM-2:00PM	Ballroom	LCTCS Awards Luncheon , <i>Sponsored by Pearson</i>

Conference ends.

#LCTCSchangeagent

13

LCTCS 2013 Annual Conference Agenda, *Session Descriptions*

Wednesday, MARCH 13

8:00 AM – 12:00 PM	Vendor Galleria	Exhibitor Set-Up
8:00 AM – 5:00 PM	Galleria	Registration Open, <i>Sponsored by Higher One</i>
8:30AM - 11:00AM	Vendor Galleria	A.M. Refreshment Break, <i>Sponsored by Global Data Systems</i>
9:00AM- 4:30PM	Meeting Rooms 1 - 13, L1-L4	SPECIAL SESSIONS - PRE-REGISTRATION REQUIRED
9:00AM-3:00PM	Meeting Room 2 <i>Agents of Change in the Community</i> #LCTCSicd10	ICD 10 Preparing for the transition from ICD 9 to ICD 10. Getting everyone ready. <i>Derrick Manns, Vice President Academics, LCTCS</i> <i>Jean Ann Hartzell, Vice President, Minzey Enterprises</i>
9:00 AM - 4:00 PM	Meeting Room 6 <i>Leadership, Professional Development, and Personal Enrichment</i> #LCTCSBannerhr	Banner HR/Payroll Refresher General overview of HR Banner functionality, using sample cases, forms, and troubleshooting strategies to address questions and challenges in the record set-up, payroll process, and termination of employees. How to correctly determine Default Earnings for hourly employees. Determining Job FTE, Hours per Day and Hours per Pay under Job Detail for employees.
9:00 AM – 4:00 PM	Meeting Room 12-13 <i>Leadership, Professional Development, and Personal Enrichment</i> #LCTCSedgar	Carl E. Perkins State Plan and EDGAR Training
9:00 AM – 4:00 PM	Meeting Room 10 <i>Changing Colleges - Changing Students</i> #LCTCSitleix	Title IX So, for those who are new to the work of Title IX compliance, or even those who have been doing this for a while, this work is extremely complex and those doing this work should be as skilled and as qualified as possible. There are valuable resources that can help you gain the knowledge needed to carry out all of your duties as the Title IX coordinator. <i>Derrick Manns, Vice President Academics, LCTCS</i> <i>Anthony Walesby, Associate Vice Provost for Academic and Faculty Affairs, and the Senior Director of the Office of Institutional Equity, University of Michigan</i>
12:00 PM - 4:00 PM	Meeting Room L3&L4 <i>Change Agents for Adult Learners</i> #LCTCSwru	WorkReady U Luncheon and Pre-Conference Session This interactive session will provide adult education directors/supervisors with updates and information on the status of the WorkReady U statewide plan for “Moving Adult Education Forward,” in Louisiana. <i>Sean Martin, Executive Director, LCTCS, WorkReady U</i> <i>Raye Nell Spillman, Director of Adult Education Services LCTCS, WorkReady U</i> <i>Jeff Riels, Director, Adult & Technical Education Research & Reporting, LCTCS, WorkReady U</i> <i>Adrienne Fontenot, Director, Adult Education Academics, LCTCS, WorkReady U</i>

Wednesday, MARCH 13

1:00PM - 3:00PM	Lower Lever, Room L2	WorkReady U, Accelerating Opportunity: A Breaking Through Initiative
3:00 PM - 4:30 PM	Meeting Room 11 <i>Leadership, Professional Development, and Personal Enrichment</i> #LCTCSpeergroups	Peer Group Leaders Meeting A meeting to discuss Thursday's Peer Group Sessions. <i>H. Neil Matkin, Executive Vice President, LCTCS</i>
9:00AM - 4:30PM	Meeting Rooms 1-13	PRE-CONFERENCE SESSIONS - OPEN TO ALL
9:00AM-4:00PM	Meeting Room 5 <i>Changing Colleges - Changing Students</i> #LCTCSminisalz	Mini Salzburg Event As our world changes, so must we. Join us for a discussion with industry on the importance of a globally prepared workforce, learn from academia about the impact globalization efforts are having on their campuses, and better understand why the Salzburg Global Seminar in Austria might be right for you. <i>Natalie Harder, Chancellor, SLCC</i> <i>William Wainwright, Chancellor, Northshore Technical Community College</i>
9:00 AM - 12:00 PM	<i>Meeting Room 7</i> <i>Changing Colleges - Changing Students</i> #LCTCSbannerpop	Banner - Population Selection This presentation will teach you how to create a rule to pull a list of student who meet the criteria of the rule you create. Pop rules can be used to pull a list of student to make manually changes to their accounts or use in jobs to perform mass updates. <i>Amber Gazave, ERP Student Services Specialist, LCTCS</i>
9:00 AM - 4:00 PM	Meeting Room 9 <i>Leadership, Professional Development, and Personal Enrichment</i> #LCTCSdspd	Disability Services Professional Development Learn ways to increase retention and graduation rates for students with disabilities while maintaining ADA compliance and course integrity at this comprehensive Pre-Conference Event. Transition will be a focus as Deborah Tsagris (Durham College, Oshawa, Ontario) shares her researched based transition program for students with disabilities. In addition, Julie Ballinger (Southwest ADA Center in Houston, Texas) will present best-practice expertise designed to ensure access to appropriate accommodations for students with disabilities under ADA guidelines. "Creating a Faculty Training Module" is the topic that will be discussed by Wendy Devall (BRCC) and Christine Collins (Sowela). <i>Georgann Mire, Office Coordinator, Baton Rouge Community College</i> <i>Julie Ballinger, Southwest ADA Center, Houston, TX</i> <i>Christine Collins, Sowela Technical Community College</i> <i>Wendy Duvall, Baton Rouge Community College</i>

Wednesday, MARCH 13

12:00PM - 8:00PM

Vendor Galleria

Exhibitor Area Open, Cyber Cafe Open

1:00 PM - 4:00 PM

Meeting Room 7
*Changing Colleges -
Changing Students*
#LCTCSgradactreporting

Grad Act Reporting

An overview of the LCTCS timeline and reporting for GRAD Act measures for the upcoming reporting year for LCTCS schools. The LA Board of Regents will discuss the GRAD Act process, LCTCS data, timelines, and helpful hints on completing and submitting narratives for measures. Session is designed to be interactive and will include a question and answer session. Please bring your GRAD Act questions and/or data.

*Sandra Kinney, LCTCS
LeAnn Detillier, Louisiana Board of Regents
Kristy Labello, Louisiana Board of Regents*

2:00PM - 3:00PM

Vendor Galleria

P.M. Refreshment Break, Sponsored by Global Data Systems

2:00PM-4:00PM

Meeting Room 1
*Career & Job Placement
Services Networking &
Professional Development*
#LCTCSCJPS

Career Services Networking and Professional Development Opportunity

If you are currently responsible for providing career and job placement services at your campus, consider joining us for a half-day pre-conference event. The agenda will be focused on topics such as the role of social media and technology in career services and the sharing of best practices. Participants should come prepared to share materials and ideas from their own experiences.

Lisa Hibner, Career and Job Development Specialist

5:00 PM – 6:30 PM

Ballroom
#LCTCSKeynote

Grand Opening Plenary Session and Keynote Address

*Van Ton-Quinlivan, Vice Chancellor for Workforce &
Economic Development
Sponsored by NCCER Build Your Future*

6:30 PM – 8:00 PM

Vendor Galleria

Grand Opening Networking Session and Reception
Sponsored by NEEBO



RECRUIT. TRAIN. RETAIN.

True workforce development starts with recruiting the best and brightest young students, training them to be craft professionals and retaining them with the opportunity to upgrade their skills.

Contact NCCER at **888.622.3720** to start building your recruiting and training programs.

WWW.NCCER.ORG | WWW.BYF.ORG | FOLLOW US:



Thursday, MARCH 14

6:30 AM - 7:15 AM	Registration Desk <i>Leadership, Professional Development, and Personal Enrichment</i> #LCTCSfit	Downtown Walk/Jog Lead By Exerfit Family Fitness A brisk walk/jog through downtown Baton Rouge to prepare your body and mind for change! <i>Sarah Mary Toce, Head Trainer/Gym Manager, Exerfit Family Fitness</i>
7:00 AM – 5:00 PM	Galleria	Registration Open, <i>Sponsored by Higher One</i>
7:00AM-8:00AM	Vendor Galleria	Browsing Breakfast, Sponsored by National Student Clearinghouse
7:00AM-5:00PM	Galleria	Cyber Café & Ethics Training <i>Sponsored by AT&T</i> Exhibits open until 5:00PM. Prize Drawing at 5:00PM
7:30AM-8:30AM	Meeting Room 13	Leader's Meeting: Chief Academic Officers, Chief Student Affairs Officers, Workforce and Institutional Research
8:00AM-9:00AM	Breakout Sessions	
	Meeting Room 1 <i>Changing Colleges - Changing Students</i> #LCTCSelectronicmaterials <i>Room Sponsor; Ambassador Education Solutions</i>	The Management and Delivery of Electronic Course Materials to Students This session will explore changes in how course materials are managed, delivered, accessed and utilized by students within the school's learning management system. The session will discuss student collaboration tools, teacher annotation tools, engagement metrics and LMS integration advances allowing teachers to embed a variety of electronic materials and external resources within the LMS. <i>Bruce Schneider, Director of Sales Engineering and Analytics, Ambassador College Bookstores</i>
	Meeting Room 2 <i>Leadership, Professional Development, and Personal Enrichment</i> #LCTCSMTG <i>Room Sponsor; Walden U</i>	Mind the Gap Using findings from a new CASE national survey, start a conversation on your campus about attitudes and expectations around fundraising and (hopefully) close the gap that often exists between campus CEOs and their chief fundraisers. <i>Paul Heaton, Director, Center for Community College Advancement, CASE</i>

IT'S TIME TO RE-INVENT
COLLEGE RETAIL.

Neebo[®]
Complete College Outfitter

VISIT BOOTH #2 to find out how together, we can redefine retail, or contact our Vice President of Campus Relations, John Callahan.
828.337.1870 | jcallahan@neebo.com | neeboleasing.com

Neebo is a division of Nebraska Book Company.

Thursday, MARCH 14

8:00AM-9:00AM

Meeting Room 3
*Changing Colleges -
Changing Students*
#lctcsstudentclearinghouse
Room Sponsor; Edmentum

Using the National Student Clearinghouse to Improve Your Services and Productivity

The National Student Clearinghouse has been working with all of the colleges in LCTCS to enable each of them to maximize all of the services that are offered to our members. From basic Core Reporting to Degree Verification, printing enrollment certificates, and tracking both your applicants who did not come, as well as those student who transfer out, the Clearinghouse can be a great partner. This session will focus on these options, all of which are, or can be, free. We can even assist you with transcripts.

Paul Taylor, Regional Director, National Student Clearinghouse

Meeting Room 5
*Making the Case in
Changing Times*
#LCTCSbusinessofeducation
*Room Sponsor;
eScience Labs*

A New Approach to the Business of Education

Changing times demand a new approach in the way institutions look at the everyday business of education. Cengage Learning works with institutions across the country on various initiatives. Use this session to learn how Learning has partnered with institutions to: Find ways to reduce student costs and improve learning outcomes; Help grow, build, and deliver reliable online learning programs; Implement digital solutions with comprehensive training; Create custom print and digital solutions specific to your curriculum needs; Explore new business models to deliver content to ensure students have materials on the first day of class.

Richard Blackburn, Institutional Solutions Director; Cengage Learning

Meeting Room 6
*Change Agents for
Adult Learners*
#LCTCSWRUbusplanDelta
*Room Sponsor;
Northwestern State
University*

WorkReady U Business Plan for Louisiana Delta Community College

Louisiana Delta Community College responded to the challenge of merging adult education services into the LCTCS system by developing its own business plan to respond to the goals and objectives outlined in the state WorkReady U plan, adopting the same strength-based approach to impact success. Implementation of the plan involved the integration of all local adult education services into LDCC's workforce development operations. The now branded "DeltaLINC" and workforce development parallel one another as both adult education and job ready training can be contextualized and integrated as it exposes students to the postsecondary environment.

*Kaye Sharbono, DeltaLINC Director; Louisiana Delta Community College
Bob Hammack, Workforce Director; Louisiana Delta Community College*

CAMPUS INSIGHT
THE EVOLUTION
OF CAMPUS
DECISION MAKING

One Focus: Higher Education
HIGHER ONE
campuslabs
Data Driven Innovation

JOIN US!

Thursday, March 14 • 3:15 - 4:15pm

Learn how to turn data into actionable information and leverage data from areas on campus such as:

- Financial transactions in the business office
- Student organization enrollment
- Course evaluations
- Student surveys

For more information visit **HigherOne.com/campuslabs**

8:00AM-9:00AM

Meeting Room 7
*Agents for the Changing
Learning Environment*
#LCTCSipadapps
Room Sponsor;
Biometric Signature ID

60 iPad Apps for Teaching Success in 60 Minutes

This fast paced presentation will review iPad technology resources designed for use in and outside of the classroom. There are literally thousands of apps that all profess to bring “magic” to the classroom experience but how do you know if they are right for you? Brantley will provide the research summary and recommendations from current educator and industry blogs that have solid ratings from users in the classroom. Attendees are encouraged to bring their iPad and/or smart technology device to share feedback through an online survey of their favorite apps for the CTE classroom.

Barry Brantley, Associate Professor, Delgado Community College

Meeting Room 8
*Changing Colleges -
Changing Students*
#LCTCSMarketengage
Room Sponsor;
Lincoln Electric

Marketing for Engagement: Not Just Numbers

Explore ways to market for your college and department with a comprehensive marketing plan that promotes student, community and staff engagement. Use the newest creative technologies that include email marketing, social media, event and video marketing. Participants will learn about complementary ways to impact and improve results using hybrid approaches. Other marketing communication methods covered include Prezi presentations, mobile apps and print media methods for student and community marketing.

Kristen Dufauchard, Coordinator, Baton Rouge Community College
Joshua Howard, Recruiter, Baton Rouge Community College

Meeting Room 9
*Agents for the Changing
Learning Environment*
#LCTCSfb

Facebook: Friend or Foe?

Right now almost one billion people on the planet Earth have a Facebook account. What are the implications of this social media for educational institutions? What are the potential benefits that Facebook could have on the educational process? Are there any negative implications that could occur from the use of this social media? These and other questions will be addressed in this presentation.

Brady LaVrier, Professor of Developmental Education, South Louisiana Community College



INSPIRE BRILLANCE TOGETHER

It's where learning doesn't always take place in a classroom, and where discovery can happen anywhere, at any time. It's where video has opened the door to learning and collaborating in a whole new way, and where class is always in session. It's where every single person can connect with teachers of all kinds wherever they may be. It's where great minds can easily come together, so it's also where the sky is the limit.

To learn more about Cisco® Education Solutions, go to www.cisco.com/go/education



Thursday, MARCH 14

8:00AM-9:00AM

Meeting Room 10
*Changing Colleges -
Changing Students*
#LCTCSmathandecon

Math and Economics: Integration and Application in Everyday Life!

As a result of the rapid changes in both our national and the global economy, our students need to be more financially savvy than ever before. The workshop provides participants an overview of fundamental concepts in economics and an opportunity to discover and explore ways to integrate and apply mathematics concepts in the instruction of economics, personal finance, and math. We will share interactive lesson plans which show teachers how to engage their students in learning the economic, mathematical, and financial concepts that apply to their everyday lives, and which are so critical for achieving financial independence and maturity.

*Janet Daniel, Associate Professor, BRCC
Claire Loup, Economic and Financial Education Specialist, New Orleans Branch, Federal Reserve Bank of Atlanta*

Meeting Room 11
Leadership, Professional Development, and Personal Enrichment
#LCTCSplaws

State Purchasing Laws-What do you need to know?

Identifying and understanding the basics of purchasing laws

George Grazioso, Assistant Director, Office of State Purchasing/Travel

Meeting Room 12
Leadership, Professional Development, and Personal Enrichment
#LCTCSstarjobs

Louisiana Star Jobs and Community & Technical Colleges

The Louisiana Workforce Commission has launched a new job search website called 'Louisiana Star Jobs'. This search engine will assist in making it easier for the unemployed to seek, apply for, and assist in training for Louisiana jobs. 'Louisiana Star Jobs' identifies and ranks jobs based on four criteria: Projected demand, projected percentage job growth, the number of advertised job openings in the past year and wages. Users can also narrow their searches based on personal variables such as salary, geographic location, and education. Career seekers will also have access to LCTCS program offerings further facilitating career & technical education.

*Jimmy Sawtelle, Star Jobs, LCTCS
Curt Eysink, Executive Director,
Louisiana Workforce Commission*

9:15AM - 10:15AM

Ballroom, #LCTCSPlenary **General Plenary Session –**

*Simon T. Bailey, Founder, Brilliance Institute
Sponsored by Louisiana's Community & Technical Colleges'
Chancellors and Regional Directors*

10:15AM-12:00PM

Meeting Rooms L3-L4

Chief Financial Officers Meeting

10:15AM – 10:45AM

Vendor Galleria

A.M. Refreshment Break, Sponsored by Cengage

10:45AM - 11:45AM

Breakout Sessions

Meeting Room 1
Agents for the Changing Learning Environment
#LCTCSWorkforcedev
Room Sponsor; Ambassador Education Solutions

Workforce Development Programs for the Construction and Maintenance Industry

With the skills gap becoming more and more pervasive, companies within the construction and maintenance industry are finding themselves competing with each other over the limited amount of skilled craft professionals available. Workforce development requires recruitment, training and retention, all of which leads to a workforce of skilled craft professionals with credentials. NCCER has established programs and processes that enable educational institutions to implement workforce development programs to meet their needs. NCCER is recognized by the industry as the training, assessment, certification and career development standard.

Steve Greene, Vice President of Workforce Development, NCCER

Meeting Room 2
Leadership, Professional Development, and Personal Enrichment
#LCTCSMethMar
Room Sponsor; Walden U

Methodical Marketing

Too many marketing plans are based on egos and anecdotes. Learn the value of using data, including market research, to inform your plans and make more effective use of your limited marketing and advertising dollars.

Paul Heaton, Director, Center for Community College Advancement, CASE

Meeting Room 3
Leadership, Professional Development, and Personal Enrichment
#LCTCSpreparedforchange
Room Sponsor; Edmentum

Being Prepared for Change

Do you feel overwhelmed by the ever evolving nutritional theories from our national media? Does seeing the pained faces of those that workout deter you from joining a fitness program? Well, this is NOT the road physical well-being should have ever taken you down. I will discuss basic ways to incorporate better nutritional value to your meals and ways to increase movement in your daily life. The discussion will be about small changes that are easy to make, relevant to your lifestyle and easy to incorporate into your daily routine.

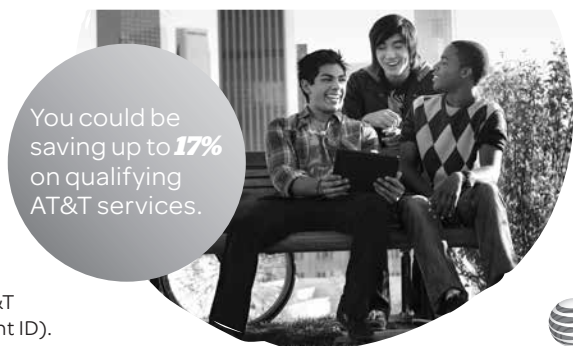
Sarah Mary Toce, Head Trainer/Gym Manager, Exerfit Family Fitness

ONLY FROM AT&T

as an employee, you can get added savings

As a part of LCTCS you'll enjoy the AT&T Sponsorship Program discount and all the other benefits of AT&T

To purchase online, visit <http://www.att.com/getIRU>. Or, to find the AT&T store closest to you visit: att.com/find-a-store If you visit a local AT&T store, please have proof of eligibility (employee badge, paystub or student ID).



*Limited-time offer. Smartphones require a new 2-year agreement with qualifying voice and data plans. Subject to Wireless Customer Agreement. Credit approval required. Activation Fee \$30/line. Geographic, usage and other terms, conditions and restrictions apply, and may result in service termination. Coverage and services not available everywhere. Taxes and other charges apply. Terms may vary based on your business agreement. Data: If usage exceeds your monthly data allowance, you will automatically be charged overage for additional data provided. Early Termination Fee (att.com/earlyterm) \$35. EFTF up to \$25 applies after 14 days. Restocking fee up to \$35. Other Monthly Charges per line may include a Regulatory Cost Recovery Charge (up to \$1.25), a gross receipts surcharge, federal and state universal service charges, fees and charges for other government assessments. These are not taxes or government required charges. Monthly discount: Available to qualified employees and students of companies, government agencies and colleges/universities with a qualified business agreement ("Business Agreement"). Subject to Business Agreement and may be interrupted and/or discontinued without notice. Applies only to the monthly service charge of qualified plans. A minimum number of employees, minimum monthly service charge for qualified plans, additional AT&T services or other requirements may apply for eligibility. Discounts may not be combined. For some accounts, actual discounts can vary monthly depending on your employer's aggregate volume of qualified charges. Offer subject to change. Additional conditions and restrictions apply. See your AT&T representative and contract and rate plan for details. Service provided by AT&T Mobility. © 2013 AT&T Intellectual Property. All rights reserved. AT&T, the AT&T logo and all other AT&T marks contained herein are trademarks of AT&T Intellectual Property. All other marks contained herein are the property of their respective owners.

Thursday, MARCH 14

10:45AM - 11:45AM

Meeting Room 5
*Empowering the Agents
of Change*
#LCTCSchange
Room Sponsor; eScience Labs

Overcoming the Resistance to Change

All too often, organizations rationalize the status quo when challenged with game changing circumstances. They perceive the present reality to be better than it truly is because they view themselves as successful. Therefore, change initiatives stall as a result of undervaluing the future state. Fear is natural. Fear is common. Fear is expected. Whenever we encounter a new environment, the first reaction is fear. It has to be. To take action, we must ensure survival. Humans use this fear to keep safe. If leaders aren't prepared, fear can sequentially lead to change resistance that will derail transformation efforts. No one can put in their best performance unless they feel secure and confident. Organizations and cultures must change to win. It's just that simple. Cultures that value continuous improvement are far better at changing their processes and implementing sustainable change. The real key is anticipating the fears and resistance to change and planning for it from the start of the transformation, no matter how big or small the scope.

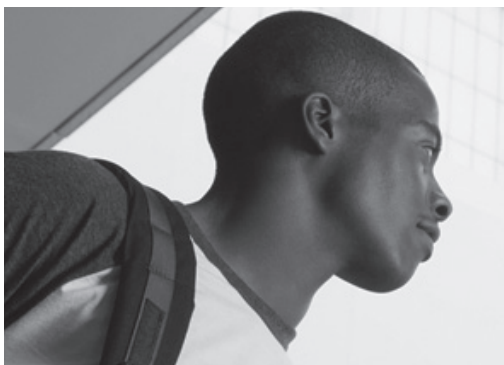
Eric Kulikowski, Managing Partner, Dare to Be Amazing!

Meeting Room 6
*Changing Colleges -
Changing Students*
#LCTCSwow
*Room Sponsor,
Northwestern State University*

Building a WOW! College Experience

We all have unsung heroes – special individuals who helped us to dream and then encouraged us to reach our dreams. In a college setting, heroes can include a wide range of people ranging from custodians to librarians to faculty and administration. Imagine a college where influences intentionally converge to create a very special student experience from day one and long after graduation. This session explores elements of the “WOW! College” and the lifelong impact that results. Designed for those who desire to make a difference.

H. Neil Matkin, Executive Vice President, LCTCS



BREAKTHROUGH

To a new world of college and career success

Pearson is your partner. Together we can improve student achievement by:

- powering developmental education redesign,
- providing solutions for workforce education and
- preparing students for the college placement test (COMPASS).

Visit us online at: www.pearsonlearningsolutions.com/academic-executives

Meeting Room 7
*Empowering the Agents
of Change*
#LCTCS21stcentury
*Room Sponsor; Biometric
Signature ID*

Education, Fallacies, and Skeuomorphs: Why Make Learning Harder

21st Century Learning - Never before has a catch phrase been interjected into mission statements around the world with so little understanding of what it means to be a 21st century learner or to use 21st century learning design. At this time in history we know more about learning, more about the brain, and more about motivation than ever before. So why are these discoveries from Cognitive Science, Education Psychology, and Sociology ignored in the classroom? With so many frameworks to choose from, why are the majority of classrooms still employing the methods used in the early 1900's to disseminate and help students assimilate information? This session will unpack what learning can be (and likely should be), showcase a few old policies and procedures embedded deeply in the educational DNA that need to go, and highlight new tools, paradigms, and frameworks that not only empower the learner, but also the teacher. From game changers based on cognitive science to best practices found in education psychology, attendees will have a better understanding of how to make tomorrow's learning start happening today. Whatever you teach, this session is for you.

Dr. Jeff Borden, VP of Instruction & Academic Strategy and Lead of the Center for Online Learning, Pearson

Meeting Room 8
*Agents for the Changing
Learning Environment*
#LCTCSvirtue
*Room Sponsor;
Lincoln Electric*

Virtue in the Virtual World: A Model for Academic Integrity in Online Learning

Online learning has opened new doors for education. For community colleges, it is a means of continuing a mission of student access through an alternative mode of delivery. However, the expansion of online classroom learning in higher education has created unique challenges in maintaining academic integrity and quality assurance. This presentation will focus on research studies of academic integrity in online classes, present a model for academic integrity that can be implemented campus-wide, and consider how community colleges can meet accreditation and public demands for ethical accountability in an online classroom while also engaging in continuous quality improvement for instruction.

Holly French-Hart, Dean, Division of Liberal Arts, Bossier Parish Community College

Meeting Room 9
*Agents of Change in
Student's Lives*
#LCTCSded

Connecting the Developmental Education Dot - Model to Explore Individual Student Needs

This presentation will be framed around developmental education and its students' needs, current trends and issues in developmental education, and factors that influence readiness, rigor and retention. Other important aspects covered in the presentation will include under preparedness, adult learning theory, at-risk and non-traditional students, first-time college students, motivation, academic advising, student support services and college knowledge.

*Donalyn Lott, Associate Professor, Nunez Community College
Jade O'Dell, Associate Professor, Nunez Community College*

Meeting Room 10
*Change Agents for
Adult Learners*
#LCTCstransition

Transition Coaches Are the Constant in the Formula of Change

Adult education students often feel hesitant about or poorly prepared for change. They may feel as though they will never solve the problem of attaining self-sufficiency because there are too many variables to work out. Transition Coaches offer the constant in the formula supportive, wraparound services that let adult education students create their own solutions. Delta Literacy Initiative for North Louisiana Communities (DeltaLINC), the adult education division of Louisiana Delta Community College, will share its model for transition coaching that helps students reduce the barriers of fear, uncertainty, low resources, or even lack of motivation.

Delene Rawls, DeltaLINC Assistant Director, Louisiana Delta Community College

Meeting Room 11
*Changing Colleges -
Changing Students*
#LCTCstransition

Tapping into the Potential of Students in Developmental Education

The Title III Federally Funded Program at BRCC is called “STARS Gate” (Students Toward Achievement, Retention, and Success). “STARS Gate” serves first-year students who enroll in one or more developmental courses, which includes English, reading, and mathematics. Academic support strategies to encourage timely completion of the developmental course sequence and the enhancement of academic and personal skills that students need to successfully complete an associate degree.

*Tanasha Brown, Project Director, Title III, Baton Rouge Community College
Joanie Charvis, Dean, Learning Resources, Baton Rouge Community College*

Meeting Room 12
*Making the Case in
Changing Times*
#LCTCSfouryearpartner

How to build effective partnerships with Four-year Universities

Northshore Technical Community College established a program called Connect to Success in partnership with Southeastern Louisiana University. Through the partnership, students receive a transparent and systematic outline for successfully completing a baccalaureate degree and/or an associate degree. The program welcomes incoming freshmen and transfer students who do not meet Southeastern Louisiana University’s admission requirements. In this presentation, you will learn how to effectively partner with four-year universities for joint admissions, registration, student services, shared facilities, and academic counseling.

*Daniel Roberts, Vice Chancellor of Student Learning & Development, Northshore Technical Community College
Bridget Laborde, Student Affairs Officer, Northshore Technical Community College
April Lavergne, Connect to Success Coordinator, Northshore Technical Community College
Amy Valentine, Program Coordinator, Northshore Technical Community College*

Meeting Room 13
*Making the Case in
Changing Times*
#LCTCSitbuyingcycle

Perspective: Escape the IT-Buying Cycle

Organizations are in a never-ending procurement cycle of IT due to the evolution of technology. We’re going to take a step back with a different perspective and look at how to escape the buying cycle and make your finance people happy in the process!

Brian Vandegrift, Executive Vice President, Innovation, Venyu

12:00 PM – 1:30 PM

Ballroom, #LCTCSsots

State of the System Address and Luncheon –

Dr. Joe May, President of the Louisiana Community and Technical College System (LCTCS)

Sponsored by CSRS

1:45 PM - 2:45 PM

Breakout Sessions

Meeting Room 1

Changing Colleges -

Changing Students

#LCTCScompletecollege

Room Sponsor; Ambassador

Education Solutions

The Complete College Outfitter

WE ARE: retail experts, techies, partners and challengers of the status quo.

OUR PURPOSE: To make college, one of life's best experiences, even better.

WE BELIEVE: That College is so much more than just textbooks, and so are we.

OUR APPROACH: We connect with our partners and guests to provide them with what they want.

What began in 1915 as a single bookstore near the University of Nebraska campus has grown to become one of the largest suppliers of textbooks in the nation. With more than 250 campus bookstores nationwide, as well as warehouses filled with millions of textbooks that are shipped to millions of students on every campus every semester, you can find us in the backpacks of students all over America. But college is more than just textbooks, and so are we. That's why we offer comprehensive textbook solutions, retail management systems, e-commerce, store design and development, and buying power and advocacy.

John Callaban, VP, Campus Relations, Neebo

Brian Wier, Director, Campus Relations, Neebo

Randy Stejskal, Vice President, Neebo Store Design

Meeting Room 2

Changing Colleges -

Changing Students

#LCTCSGloballearning

Room Sponsor; Walden U

Engaging Students through Global Learning Activities

This is a collaborative effort by educators from different LCTCS institutions who attended the Salzburg Global Seminar during the summer of 2012. We want to use this experience to improve our students' knowledge and understanding of the global connectivity that exists today, and help them understand their place in and relationship with the rest of the world. As part of our mission to prepare our students for life in the twenty-first century, we will share classroom activities designed to keep students engaged while broadening their horizons beyond Louisiana.

Janet Daniel, Associate Professor, BRCC

Mamta Misra, Business Program Coordinator, SLCC

Jennifer McMullen, Assistant Professor of English, BPCC

Michelle Grant, Professor of Business, BPCC



Jones Walker, with more than 375 attorneys, provides a comprehensive range of legal services to a national and international corporate client base through offices in Alabama, Arizona, the District of Columbia, Florida, Georgia, Louisiana, Mississippi, New York, and Texas.

Thursday, MARCH 14

1:45 PM - 2:45 PM

Meeting Room 3
*Agents for the Changing
Learning Environment*
#LCTCSfacilities
Room Sponsor; Edmentum

Programming Facilities to Support Your Educational Plan

Your facilities exist for the sole purpose of supporting your educational plan. This session will help prepare you in understanding the importance of up front planning and programming for facility projects so the resulting design and construction fulfills your educational needs. The programming effort explores all of the possibilities, including identifying all of your educational space needs, their size, shape, the relationship between spaces and the amenities required to shape the building with functional spaces. We will walk you through our step by step process of creating a building program in partnership with all of the stakeholders to deliver a twenty first century learning environment.

Brian LaFleur, Program Manager, CSRS, Inc.
Edward Jenkins, Project Manager, CSRS, Inc.
John Alberstadt, Project Manager, CSRS, Inc.

Meeting Room 5
*Changing Colleges -
Changing Students*
#LCTCStechnologyuse
Room Sponsor; eScience Labs

Technology Use Cases

Understanding what students expect is vital for engaging them in the classroom. Today's students are digital natives & most are not only comfortable with technology, but expect it to be available wherever and whenever they need it. Education is shifting from a teacher-centric process with limited use of technology, passive learners and little peer collaboration to a participatory process in which the learner is motivated, learning is personalized rather than teacher-imposed and student collaboration is a critical classroom resource. The new model relies heavily on technology, but putting it to use in the classroom can be difficult. In this workshop AT&T will offer use cases from other higher education institutions that have used technology to support learning in the new classroom environment.

Jan Waguespack, AT&T Manager for LCTCS, AT&T

Meeting Room 6
*Making the Case in
Changing Times*
#LCTCSmyrole
*Room Sponsor;
Northwestern State University*

What is my role in the college strategic plan process, accreditation outcomes, and meeting GRAD Act targets?

A presentation focused on the alignment of GRAD Act Objectives and Measures with the college strategic plan, COE and SACS standards. Identify ways to effectively use existing programmatic and institutional accreditation standards in addition to strategic planning goals and objectives to maximize GRAD Act targets.

*Shelia Singletary, Director of Institutional Research & Effectiveness,
Northshore Technical Community College*
*Stanton McNeely, Director of Institutional Research & Effectiveness,
Fletcher Technical Community College*

Join The Conversation!!!
#LCTCSchangeagent



@GoLCTCS

Meeting Room 7
*Empowering the Agents
of Change*
#LCTCSusandthem
*Room Sponsor; Biometric
Signature ID*

Us (2 year institutions) AND Them (4 year institutions) - Rather than Us VERSES Them

If you could ask your peer at a four year institution one question, what would it be? What if you could ask 10 questions? At South Louisiana Community College, college leadership meets with its peers from University of Louisiana at Lafayette once a semester and trust us, -the questions go both ways.

*Natalie Harder, Chancellor, South Louisiana Community College
Jennifer Jackson, Associate Vice Chancellor for Institutional
Advancement, South Louisiana Community College*

Meeting Room 8
*Changing Colleges -
Changing Students*
#LCTCSengageinCP
*Room Sponsor;
Lincoln Electric*

Curriculum Integration - An Innovative Response to Engaging Students in the Career Process

The Baton Rouge Community College Career Center has developed supportive faculty relationships across the college curriculum in order to increase the number of students who actively engage in career services offered. This presentation will introduce the model of a curriculum integration approach to providing career services to students and showcase one example of a program developed by two business faculty which extended learning beyond the classroom and provided an opportunity for students to become actively engaged in the learning process and in so doing also increase the students' career readiness skills in preparation for a successful job search.

*Lisa Hibner, Director of the Career Center, Baton Rouge
Community College
Erin Rice, Instructor, Business and Social Sciences, Baton Rouge
Community College
Andrea Vidrine, Associate Professor, Business, Baton Rouge
Community College
Career Center: Sandra Taylor, Brittney Baptisite, Edith
Bellizaire, Baton Rouge Community College*

Meeting Room 9
*Agents of Change in
Student's Lives*
#LCTCSstratatrisk

Successful Strategies for Engaging At-Risk Youth in Post-Secondary Education Transitions

With funding provided by the Open Society Foundation, the NTCC YouthBuild Bogalusa training program implemented the Post-Secondary Education Initiative model to ensure student success in transitioning from a GED to a post-secondary training program or alternate career pathway. This model reinforces the notion that receiving a diploma or GED, getting a job or advancing in education, obtaining a nationally-recognized credential or entering an apprenticeship program are not "ends" unto themselves; rather, they are just steps on a career pathway journey in which there are many career exit points and different knowledge and skill entrance points that prepare students for subsequent career exits. The Post-secondary Education Initiative funded through this model reinforces the idea that learning is not finite, but life-long.

*William Wainwright, Chancellor, Northshore Technical
Community College
Jamie May, PSE Coordinator, Northshore Technical
Community College*

Thursday, MARCH 14

1:45 PM - 2:45 PM

Meeting Room 10
*Change Agents for
Adult Learners*
#LCTCSenroll

Managing Managed Enrollment

UReady “Ursel” for Success to Happen! RUSH is how DeltaLINC implements a well- organized managed enrollment. I will use this model to demonstrate the effectiveness of managed enrollment. In our changing roles as adult educators, we must bring structure and solid principles to our students. It is our task to seek, encourage, educate, and mentor adults in our communities to take on the responsibilities of life by accepting educational opportunities.

Kaye Sharbono, DeltaLINC Director, Louisiana Delta Community College
Rhonda Rhodes, ABE Lead Instructor, Louisiana Delta Community College

Meeting Room 11
*Changing Colleges -
Changing Students*
#LCTCSaotaaccct

AO/TAACCCT

Working together with two major initiatives to solve workforce and adult education problems in Louisiana.

Derrick Manns, Vice President Academics, LCTCS
Sean Martin, Executive Director Work Ready U, LCTCS
Lisa Wheeler, Director of Institutional Research and Grants, Bossier Parish Community College
Darlene Miller-Executive Director, National Council of Workforce Education
Nan Poppe, Consultant and LA Accelerating Opportunity Initiative Coach

Meeting Room 12
*Empowering the Agents
of Change*
#LCTCSreaffirmation

Reaffirmation Requirements

An informative session regarding your institution’s reaffirmation requirements.

Donna Barrett, Director of Institutional Finance, SACS/COC

Meeting Room 13
*Changing Colleges -
Changing Students*
#LCTCSaspenu

Cognitive Process-based Education

Since the late 1800’s our societal concept of education, learning and teaching has not changed in any significant way. Discussions about education are dominated by well-meaning academics to whom we all listen because we either don’t see an alternative or we don’t know to what we should be listening. Technology continues to offer great opportunities, yet we squander them by continuously re-implementing an old worldview of education. Once we consider how learning really works and what teaching really means, the alternative becomes much clearer.

Gerald Williams, President, Aspen University

Need More Time In Your Day?

Ask about our time-saving services for verification, transcript, research, and reporting.

Paul Taylor | 512-551-9347 | taylor@studentclearinghouse.org

**NATIONAL STUDENT
CLEARINGHOUSE**

www.studentclearinghouse.org



2:45 PM – 3:15 PM

Vendor Galleria

PM Refreshment Break, *Sponsored By Cisco Systems*

3:15 PM - 4:15 PM

Breakout Sessions

Meeting Room 1
Agents for the Changing Learning Environment
#LCTCStelepresence
Room Sponsor, Ambassador Education Solutions

Lecture-Capture with TelePresence Video Systems in Higher Education

Please join us for a demonstration of Cisco TelePresence Video Systems for use as a distance learning tool and a capture mechanism for live and Video-on-Demand classes. The Cisco Capture/Transform/Share suite of products will be presented as they apply to higher education.

Lance Ford, Business Development Manager, Cisco
Mark Workman, Collaboration Product Specialist, Cisco

Meeting Room 2
Leadership, Professional Development, and Personal Enrichment
#LCTCSBannerReq
Room Sponsor, Walden U

Banner Requisition Approval Setup and Maintenance

An overview for setting up account codes in FOMAQR, approvers in FOMPROE, and approval routing for e-requisitions in FTMAPPQ.

Mike Constantin, Director of Purchasing, Baton Rouge Community College
Kenneth Roush, ERP Finance Specialist, LCTCS

Meeting Room 3
Changing Colleges - Changing Students
#LCTCSgoogledocs
Room Sponsor, Edmentum

Using a Google Docs Spreadsheet to Track Students

Participants will learn how to create a Google Docs spreadsheet, with forms, which can be utilized for campus locations where students are required to sign in to see college personnel such as advisor offices, financial aid, dean offices, etc. The data is automatically placed on the spreadsheet which can then be used for tracking and evaluation purposes.

Richard Robins, Academic Advisor, BPC
Chris Shaw, Instructor, BPC

Meeting Room 5
Agents for the Changing Learning Environment
#LCTCSlabkits
Room Sponsor, eScience Labs

The value of lab kits for online, hybrid, and traditional science courses: Lessons learned from a converted skeptic

This session discusses how to offer faculty training when using lab kits for online and hybrid science courses. It is essential that all full-time and adjunct faculty are properly prepared for the teaching online science courses labs and labs that students perform at home with a lab kit. Simple to follow principles for faculty preparation during ins-service time or through virtual training can aid in the success of your students. Also learn how one school GIVES BACK with their used lab kits through service learning. The integration of STEM, learning outcomes attainment, and civic responsibility can make a difference for your students and community by using lab kits for online science courses.

Brian Shmaefsky, Professor of Biology & Service Learning Coordinator, Lone Star College - Kingwood

Thursday, MARCH 14

3:15 PM - 4:15 PM

Meeting Room 6
*Changing Colleges -
Changing Students*
#LCTCScampusinsight
*Room Sponsor; Northwestern
State University*

Campus Insight: The Evolution of Campus Decision Making

Institutions are looking for ways to reinvent themselves and thrive in the ever-changing regulatory and competitive landscapes. Data are often seen as possible answers to these challenges. While data to guide decision making are important, turning data into information and insight is a more valuable endeavor. A number of institutions have embraced an innovative new concept, Campus Insight. This session will examine how institutions are leveraging data from different areas of the campus such as financial transactions in the business office, student organization enrollment, course evaluations, student surveys, and more to help guide strategic initiatives and make more insightful decisions.

John White, Vice President, Product Management, Higher One

Meeting Room 7
*Agents for the Changing
Learning Environment*
#LCTCSacceleration
*Room Sponsor; Biometric
Signature ID*

Acceleration: Models of Cooperation and Integration of Developmental Education

Increasingly, community colleges are looking at ways to improve retention of underprepared students. In "Accelerating the Academic Achievement of Students Referred to Developmental Education", Nikki Edgcombe (2011) stated that mounting evidence suggests that the traditional sequence of developmental education courses hinders community college students from entering college level coursework and ultimately earning a credential. One strategy for improving retention of developmental students is acceleration. This presentation will introduce several models of acceleration that have emerged in the past twenty years, all of which stress cooperation and integration of developmental and general education curricula.

*Scott Higginbotham, Coordinator of Developmental Education,
LA Delta Community College*
*Sara Reed, Coordinator of Academic Seminar, LA Delta
Community College*

Meeting Room 8
*Changing Colleges -
Changing Students*
#LCTCSunivpartner
Room Sponsor; Lincoln Electric

Developing Partnerships with Universities in Louisiana to Foster Education, External Engagement, and Workforce Development

In this presentation, we will introduce the "Louisiana Alliance for Simulation-Guided Materials Applications", an alliance of seven universities in Louisiana. We'll discuss potential and current partnerships with community and technical colleges that foster education, and address external engagement and workforce development in the State. Current partnerships include the Baton Rouge, Bossier Parish, Louisiana Delta, and South Arkansas Community Colleges. We'll also address opportunities for community and technical college students to transition to four-year colleges.

Juana Moreno, Louisiana State University
Pedro Derosa, Louisiana Tech University
Leigh Townsend, Louisiana State University

Richard P. Blackburn
Director, Institutional Solutions
richard.blackburn@cengage.com
855.236.4243 x9593



CENGAGE
Learning

Georgiann Adams
District Manager
georgiann.adams@cengage.com
855.236.4243 x9241

3:15 PM - 4:15 PM

Meeting Room 9
*Changing Colleges -
Changing Students*
#LCTCSThriftyPR

Thrifty PR: Leverage Free Media to Convey Your Message

Limited funds for advertising? Limited resources to get the word out about your successes, your revenue generators, and your fundraisers? Maximize the power of free media -- such as area news outlets, social media, and your website -- to get results when the advertising dollars aren't there.

*Brett Downer, Director of Marketing and Public Relations,
SOWELA Technical Community College*

Meeting Room 10
*Leadership, Professional
Development, and Personal
Enrichment*
#LCTCSgradact

LaGrad Act for Higher Education Purchasing

An overview of LSU Purchasing's role in the 2010 LA GRAD (Granting Resources and Autonomy for Diplomas) Act that will grant colleges and universities increased autonomy and flexibility in exchange for a commitment to meet clearly defined statewide performance goals, including boosting graduation rates.

*Marie Frank, Chief Procurement Office,
Louisiana State University*

Meeting Room 11
*Agents for the Changing
Learning Environment*
#LCTCSsos

Changing How We Support Our Students

For nearly ten years, Kaplan University has provided online support for students. Assistance is offered in writing, math, science, technology, and business using meeting platforms, online resources, and email services. This presentation will detail how Kaplan has designed and implemented and online learning centers to provide effective online academic support. The presentation will also include information for creating free or low cost learning objects.

*Peggy Hobensee, Kaplan University/Fletcher Technical
Community College*

Meeting Room 12
*Leadership, Professional
Development, and Personal
Enrichment*
#LCTCSstatetravel

State Travel Guidelines

A review of PPM49, the State's travel regulations. Review will include a general overview of travel regulations including new policy changes effective for fiscal year 2013. Class will also include a question and answer session for travel issues, clarifications, etc.

Tammy Toups, Assistant Director, Office of State Purchasing/Travel

Meeting Room L2

Faculty Senate Meeting

4:20PM - 5:00 PM

Meeting Rooms 1-13,
L1-L4

Peer Group Networking Opportunity, Sponsored by
Ambassador Education Solutions

5:00 PM - 5:30 PM

Vendor Galleria

Exhibit Hall closes—Prize Drawings!

5:30 PM - 7:00 PM

Louisiana Art & Science
Museum

President's Networking Session and Reception
(Invitation Only) Sponsored by *Sisung Group*

ENJOY A NICE DINNER WITH A GROUP ON YOUR OWN!

Friday, MARCH 15

7:00 AM – 12:00 PM

Galleria

Registration is Open, *Sponsored by Higher One*

7:00 AM – 8:00 AM

Galleria

Browsing Breakfast
Sponsored by Breazeale, Sachse and Wilson, LLP

8:00 AM - 9:00 AM

Breakout Sessions

Meeting Room 1
*Empowering the Agents
of Change*
#LCTCSpopmusic

Utilizing Popular Music to Initiate the Discussion of Positive Change for Faculty

What do the Beatles, Marvin Gaye, Twisted Sister, Bob Marley, Alicia Keys and Aerosmith have in common? The ability to demonstrate how positive change should not be feared, and how music can be a non-threatening tool to initiate the discussion of change with faculty.

Peter Cho, Lead Department Chair/Arts and Humanities Division, Delgado Community College

Meeting Room 2
*Agents of Change in the
Community*
#LCTCSalumni

Alumni: A Hidden Treasure

A new CASE national survey of community college alumni relations programs provides useful benchmarking data as well as guidance on some of the more effective communications, engagement and fundraising strategies. Also get tips on finding your former students and simple ways to engage them that don't always involve asking them for money.

Paul Heaton, Director, Center for Community College Advancement, CASE

Meeting Room 3
*Leadership, Professional
Development, and Personal
Enrichment*
#LCTCSbusinessmodeling

Business Modeling in Today's College Funding Environment

Cost Benefit Analysis, Program Review and implications for becoming a tuition based institution

Joe Marin, Director of Budget and Planning, LCTCS

Meeting Room 5
Changing Lives
#LCTCSchangeaccess

Change through Access: Students with Learning Disabilities

The first step to promoting academic access and success for students with learning disabilities (LD) is through LD awareness. This presentation features simulation activities designed to help participants understand the frustrations of LD students and provides best instructional practices, ADA regulations and reasonable accommodation information. The lives of LD students are changed forever when their instructors and student service staff appreciate their struggles and utilize researched based retention strategies to promote academic achievement that leads to graduation. Dyslexia, Dysgraphia, ADHD and Dyscalculia will be discussed.

Georgann Mire, Office Coordinator, Baton Rouge Community College
Wendy Devall, Director, Disability Services, Baton Rouge Community College



Breazeale, Sachse & Wilson
is a proud supporter of
Louisiana Community and
Technical College System.



BREAZEALE,
SACHSE &
WILSON, L.L.P.

Visit us at bswillp.com.

8:00 AM - 9:00 AM

Meeting Room 6
*Agents for the Changing
Learning Environment*
#LCTCSlouis

LOUIS and Library Resources: Online and Beyond

Presenters will describe and demonstrate online Library resources available from LOUIS (the LA. Library Network). Online resources to improve student learning, including articles (journal, magazine, and newspaper), e-books, skills tutorials (language, math, vocational, etc.), test prep help, and access to hundreds of reference titles from major academic publishers, are available to support both online and face-to-face courses via your Community College Library. A brief description of LOUIS and consortium membership will also be presented.

*Wendy Johnson, Director of Library Services, River Parishes
Community College*
Sara Zimmerman, Executive Director, LOUIS Library Network

Meeting Room 7
*Agents of Change in the
Community*
#LCTCSintegrate

Integrating ABE/GED with Career Pathways: The Nuts and Bolts

The purpose of this session is to present strategies for integrating ABE/GED into existing college/career readiness pathways. As part of a pilot program, DeltaLINC and Louisiana Delta Community College (LDCC) faculty united to design and implement I-BEST (Integrated Basic Education and Skills Training) approaches to integrated teaching/learning. Topics covered will include the nuts and bolts of program design and execution. Workshop attendees should expect to gain a better understanding of concurrent enrollment and integrated teaching, benefits and challenges of both, and the motivation to move forward with the implementation of their own programs.

*Vickie Wheelis, Workforce Coordinator, DeltaLINC, Louisiana
Delta Community College*
*Bob Hammack, Director, Workforce Development, Louisiana
Delta Community College*

Meeting Room 8
*Change Agents for Adult
Learners*
#LCTCSpbl

Project Based Learning

This breakout presentation is an argument for using Problem Based Learning(PBL) with adult learners.

*Esperanza Zenon, Assistant Professor, River Parishes
Community College*



PEOPLE. EXPERTISE. SOLUTIONS.

**Come see us
in BOOTH 15.**

**Have a great
Conference!**

www.getgds.com
facebook.com/globaldatas
twitter@globaldatas

Friday, MARCH 15

8:00 AM - 9:00 AM

Meeting Room 9
*Leadership, Professional
Development, and Personal
Enrichment*
#LCTCSandson

Social Media “The New Hands On”

This session will go over social media guidelines that institutions can adopt to ensure brand awareness and relevant, consistent content for social media posting. Attendees will be provided tips to implement a comprehensive social media strategy that will open multiple venues of communication for students, faculty, and staff. Providing guidelines to assist you in starting and/or maintaining a social media presence as a member of the LCTCS community. Applying to all social media channels, which include, but are not limited to, Facebook, Twitter, LinkedIn, and YouTube, Instagram, blogs, and chat groups.

Dwayne Grant, Coordinator of Career Pathways & Social Media, LCTCS

Meeting Room 10
*Leadership, Professional
Development, and Personal
Enrichment*
#LCTCSLDI

LCTCS’s Leadership Development Institute: Success?

The LDI was created by the LCTCS as a means of improving the leadership abilities of faculty, staff, and administrative personnel throughout the system, a “grow your own” leadership program (LDI Cohort 2005/2006, 2006). The purpose of the mixed methods study to be discussed was to determine the impact of participation in LDI on the career and educational goals of former cohort members. Study results indicate LDI participation does significantly impact the career goals of former cohort members. Although the results for educational goals were not significant, a positive impact was noted.

Peggy Hobensee, Kaplan University/Fletcher Technical Community College

9:15 AM - 10:15 AM

Breakout Sessions

Meeting Room 1
*Leadership, Professional
Development, and Personal
Enrichment*
#LCTCSocr

OCR--Contract Requirements

An overview of the Office of Contractual Review and the contracting requirements for Personal, Professional, Consulting and Social Services

Pamela Rice, Interim Director, Office of Contractual Review

Meeting Room 2
*Changing Colleges - Changing
Students*
#LCTCSAccessforall

Access for All Students: Best Practices for Faculty/Staff from the Disability Services Office

Collaboration between all the Disability Services professionals in the LCTCS System, this presentation is designed to increase connectivity between the DS office and LCTCS faculty/staff. This access building training module for instructors and staff will include the following topics: confidentiality, appropriate language, importance of self-identification, terminology, instructor’s responsibilities, policies and procedures, cheating on proctored tests and Universal Design. Presenters will provide a training module power point to participants for dissemination at their institutions as well as implementation ideas.

*Wendy Devall, Director of Disability Services, BRCC
Georgann Mire, Office Coordinator, BRCC*

Meeting Room 3
Changing Lives
#LCTCSangelsbullseye

Fletcher's Angels: Bullseye- Targeting Technical Programs

The Fletcher Angels will take you through innovative techniques in recruiting for technical programs using existing staff and faculty with limited funds. Learn how they partnered with businesses, nonprofit organizations, other colleges and universities to encourage students to enroll in technical education programs for their region. The Angels will train you how to stake out funding through private and nonprofit sources and maneuver through public funding. Hit the BULLSEYE and receive specifically targeted marketing materials and tools to help attract students to your technical programs.

Elmy Savoie, Executive Director of Institutional Advancement & External Relations, Fletcher Technical Community College
Nicol Blanchard, College & Career Transition Coordinator, Fletcher Technical Community College
Angela Hebert, Director of Admissions, Fletcher Technical Community College

Meeting Room 5
Agents for the Changing Learning Environment
#LCTCSopensource

Open-Source Textbooks: A Chance for Change

Open-source textbooks offer an amazing opportunity for both students and educators. According to the College Board, the average cost of books and supplies for a student at a two-year institution was \$1,182 for the 2011-2012 school year. In an environment where we are constantly required to raise tuition costs due to decreased state funding, this cost is a significant burden to our students. At SOWELA, we are trying to incorporate open-source materials into some of our courses and believe that the lessons we have learned could help other LCTCS institutions.

James Mendez, Physics Instructor, Sowela Technical Community College

Meeting Room 6
Leadership, Professional Development, and Personal Enrichment
#LCTCSbalinHightech

Maintaining Balance in High Tech Times

Because of the technology that now exists, the line between work and home has been erased and workers now spend an average of 16.6 hours more per week working than they did 5 years ago. This session defines balance, describes the challenges of maintaining balance, and gives helpful tips on how to restore balance in your life.

Kay McDaniel, Director, CATC

Meeting Room 7
Leadership, Professional Development, and Personal Enrichment
#LCTCSsecretagent

Changents: The Secret (and not so Secret) Agents of Change

It's a secret! You'll have to come and see for yourself (what kind of Secret Agents would we be if we told you here?!?) ;-)

Jim Henderson, Chancellor, BPC
Jimmy Sawtelle, Senior Vice President for Workforce Solutions, LCTCS

Friday, MARCH 15

9:15 AM - 10:15 AM

Meeting Room 8
*Agents of Change in
the Community*
#LCTCSregionalneeds

Aligning Programs with Regional Needs

This presentation will cover best practices in engaging with business and industry, conducting educational needs assessments and creating occupationally-oriented learning objectives.

Susana Schowen, Workforce Initiatives Manager, LED FastStart

Meeting Room 9
*Changing Colleges -
Changing Students*
#LCTCSEETC

Embedding Emergenetics Into a Technical Curriculum

Build the perfect WE team! Solve problems creatively! Manage change! Increase productivity! Develop leaders! Take it a step further and share valued skills by making Emergenetics a part of your student-centered curriculum! River Parishes Community College (RPCC) successfully embedded EMERGENETICS into its PTEC 2070, Statistical Quality Control class to help students be better prepared for the workforce! "Emergenetics... is strength based thinking and behavioral analysis that starts with science and ends with empowered employees..." (Emergenetics.com). RPCC faculty and staff will share this positive experience, including the process of integrating Emergenetics, classroom activities, the results yielded, and students' responses. Join us for an exciting & humorous workshop!

Jay Anderson, Instructor/Dept Head, River Parishes Community College
Becky Etzel, Director of Student Services, River Parishes Community College
Melba Kennedy, Director of Strategic Initiatives, River Parishes Community College

Meeting Room 10
*Changing Colleges -
Changing Students*
#LCTCSactivelearning

Successful Active Learning Techniques in Developmental Education Classrooms

This presentation examines active learning techniques that provide instant feedback and their effect on student engagement and success. The techniques examined will consist of the IF-AT, Poll anywhere, and other active learning techniques. Each method will be introduced and then a case study discussing the effects on student engagement/ performance will be examined.

Sara Reed, Academic Seminar Coordinator, Louisiana Delta Community College
Scott Higginbotham, Developmental English Coordinator, Louisiana Delta Community College

10:15 AM – 10:30 AM

Galleria

A.M. Refreshment Break , *Sponsored by Jones Walker*

You play. We pay. We all smile.

More than \$2.6 billion contributed to fund K-12 public education in Louisiana!



louisianalottery.com

Ticket purchasers must be at least 21 years of age. If you or someone you know has a gambling problem, call: 1-877-770-7867.

10:30 AM - 11:30 AM

Breakout Sessions

Meeting Room 1
*Leadership, Professional
Development, and Personal
Enrichment*
#LCTCSbanner

Banner--Everything Else You Didn't Know

Banner is a complex administrative system with many things that happen behind the scenes. Come learn more to enable you to have Banner work FOR you!

Ken Roush, ERP Finance Specialist, LCTCS

Meeting Room 2
*Leadership, Professional
Development, and Personal
Enrichment*
#LCTCSposnews

Why don't you print more positive news?

Media relations is a marathon, not a sprint. Learn how to cultivate better relations (or repair a bad relationship) with your local media. Also get tips on how to be prepared for a campus crisis.

*Paul Heaton, Director, Center for Community College
Advancement, CASE*

Meeting Room 3
Changing Lives
#LCTCSfinaidrecruit

Financial Aid in Recruitment and Retention

This presentation will examine the important role financial aid can play in enhancing the recruitment and retention efforts at our institutions. The presenter will explore proven strategies for increasing student enrollment through solid financial aid policies and procedures.

*Kristine Strickland, Vice President for Student Services and
Student Financial Assistance, LCTCS*

Meeting Room 5
*Agents for the Changing
Learning Environment*
#LCTCSfacultyor

Faculty Orientation for Online Teaching Using Technology Tools

This session is beneficial for Faculty teaching online classes. Participants will view a live demo of how to use cloud computing using Google drive and sky drive, collaborate by creating online surveys and sharing google documents. Free online teaching tools. View demo of IRISnotes 2, digital pen that converts hand written notes on ordinary paper to digital text. Using camtasia studio 8 recording which is ADA compliant record podcasts/vodcasts of lecture material for online delivery. Using Moodle LMS to download grades and use Pivot tables to analyze grade sheet. RPCC has integrated technology and piloted Faculty evaluations using mobile phones.

*Savitha Pinnepalli, Assistant Professor, Computer Science, River
Parishes Community College*

*James Rolfes, Associate Professor, Business, River Parishes
Community College*

**LOUISIANA'S
HOMEGROWN CLOUD**

MOVE your servers to the CLOUD
- RIGHT HERE in your own backyard.

VENYU 225-214-3800 www.Venyu.com **vmware**
V CLOUD/POWERED

Friday, MARCH 15

10:30 AM - 11:30 AM

Meeting Room 6
*Agents of Change in the
Community*
#LCTCShep

High School Equivalency Program (HEP) going State Wide

The High School Equivalency Program (HEP) helps migrant and seasonal farmworkers (or dependents of such workers) who are 16 years of age or older and not currently enrolled in school to obtain the equivalent of a high school diploma. The HEP program is being implemented in the Northeast of Louisiana, and the plan is to provide HEP services state wide. We have built a very strong partnership with the Louisiana Migrant Education Office to serve Out of School Youth (OSY). The attendees will learn about the benefits the HEP program offers and how can benefit their local program.

*Andres Enriquez, HEP Coordinator, Louisiana Delta
Community College*
*Delene Rawls, Assistant Director and Grants Manager, Delta
Community College*
*Kaye Sharbono, DeltaLINC Director, Louisiana Delta
Community College*

Meeting Room 7
*Leadership, Professional
Development, and Personal
Enrichment*
#LCTCSgoogleU

Google+ U: Changing Your World [By Making It Smaller]

Come learn about the new technologies that are transforming the classroom and the conference room to a new virtual environment. It powers Leadership, Transfer of learning, and relationship building over multi-platform, multi-device, multi-location. Best thing, it's FREE to use!

*Jimmy Sawtelle, Sr. Vice President for Workforce Solutions,
LCTCS*
*Earl Meador, Director, South Central Louisiana Technical
College*
*Cindy Poskey, Dean, South Central Louisiana Technical College,
River Parishes Campus*
*Judith Wright, Business Office Administration, South Central
Louisiana Technical College, River Parishes Campus*

Meeting Room 8
*Making the Case in
Changing Times*
#LCTCSbridgegap

Bridging the Gap Between Strategy and Execution: The 4Ms and Balanced Scorecards

Many organizations have a well-defined strategy, but fail at execution. While there are various reasons for this, most often execution fails because day-to-day operations are not aligned with organizational strategy. In an attempt to bridge the gap between strategy and execution, we often employ lagging indicators that lack predictive power to enable more proactive decision making. The 4Ms: motivate, manage, monitor, measure and the Balanced Scorecard framework are excellent tools for accomplishing this alignment. In this session, we explore the process of implementing the 4Ms with the Balanced Scorecard for the Workforce Development function of the college.

*Bruce Waguespack, Executive Director for Economic Development
and Workforce Solutions*

10:30 AM - 11:30 AM

Meeting Room 9
*Changing Colleges -
Changing Students*
#LCTCSolms

The Fletcher Flip- Engaging Students Using Multimedia in an Online Learning Management System

Two business and technology instructors will share their flipped experiences using multimedia, especially video, to create a more personable virtual classroom while meeting the needs of students with various learning styles as a supplement for face-to-face or hybrid course and as a complete online course. We will discuss the why, what, and how of incorporating and creating multimedia for a virtual classroom. All techniques demonstrated will use freely available software tools and inexpensive computer hardware to create multimedia content for a virtual classroom.

Brenda Babin, Computer Science Instructor, Fletcher Technical Community College
Susan Guerrero, Business Instructor, Fletcher Technical Community College

Meeting Room 10
*Making the Case in
Changing Times*
#LCTCSfuninfundraising

Putting the Fun Back Into Fundraising

The BPCC 100 is the signature fundraiser for BPCC Foundation in support of the student scholarship fund. The event is a full day of high energy racing where drivers from local business and organizations zoom around the BPCC speedway in customized go-karts with NASCAR® body styles (not affiliated with NASCAR). The BPCC 100 has raised a combined total of \$130,000 over the four years we have been conducting the event.

Stephanie Rogers, Director, BPCC
Shelli Ulrich, Director of Development & Alumni Affairs, BPCC
Trence McCoy, Instructor, Small Engines Northwest Louisiana Technical College

12:00 PM – 2:00 PM

Ballroom

LCTCS 2013 Awards Luncheon *Sponsored by Pearson*

We hope you have enjoyed the conference! Please drive carefully!

Presenter Contact Information

John Alberstadt

*Project Manager
CSRS, Inc.*

*6767 Perkins Road, Suite 200
Baton Rouge, Louisiana 70808
(225) 769-0546
alberstadt@csrsonline.com*

Melanie Amrhein

Executive Director

*Louisiana Office of Student Financial
Assistance*

Jay Anderson

Instructor/Dept Head

River Parishes Community College

*9697 Airline Hwy.
Sorrento, Louisiana 70778
225.675.5397*

janderson@rpcc.edu

Brenda Babin

Computer Science Instructor

Fletcher Technical College

*1407 Highway 311
Schriever, Louisiana 70395
985.448.7900
brenda.babin@fletcher.edu*

Brittney Baptisite

Career Center

Baton Rouge Community College

201 Community College Drive

Baton Rouge, Louisiana 70806

225-216-8244

Donna Barrett

Director of Institutional Finance

SACS/COC

*1866 Southern Lane
Decatur, Georgia 30033
404-679-4501 ext. 45
dbarrett@sacscoc.org*

Edith Bellizaire

Career Center

Baton Rouge Community College

201 Community College Drive

Baton Rouge, Louisiana 70806

225-216-8244

Richard Blackburn

Institutional Solutions Director

Cengage Learning

216 Semel Drive NW, #364

Atlanta, Georgia

30309

601-927-5136

richard.blackburn@cengage.com

Nicol Blanchard

College & Career Transition

Coordinator

Fletcher Technical Community College

1407 Highway 311

Schriever, Louisiana 70360

nicol.blanchard@fletcher.edu

Dr. Jeff Borden

VP of Instruction & Academic Strategy

and Lead of the Center for Online

Learning

Pearson

2154 E. Commons Ave. Suite 4000

Centennial, Colorado 80122

303.658.1274

jeff.borden@pearson.com

Sujuan Bouttè

Deputy Executive Director

Louisiana Office of Student Financial

Assistance

Barry Brantley

Associate Professor

Delgado Community College

615 City Park Avenue

New Orleans, Louisiana 70119

504-957-2207

bbrant@dcc.edu

Tanasha Brown

Project Director, Title III

Baton Rouge Community College

201 Community College Dr.

Baton Rouge, Louisiana 70806

225-216-8103

brownt@mybrcc.edu

John Callaban

VP, Campus Relations

Neebo

4700 S. 19th Street

Lincoln, Nebraska 68512

828-337-1870

rnorris@neebo.com

Jeanie Chavis

Dean, Learning Resources

Baton Rouge Community College

201 Community College Dr.

Baton Rouge, Louisiana 70806

225-216-8186

chavisj@mybrcc.edu

Sachin Chintawar

Economist

Louisiana Workforce Commission

Peter Cho

*Lead Department Chair/Arts and
Humanities Division*

Delgado Community College

615 City Park Avenue

New Orleans, Louisiana 70119

504-671-6370

plcho@dcc.edu

Mike Constantin

Director of Purchasing

Baton Rouge Community College

201 Community College Drive

Baton Rouge, Louisiana 70806

1-866-217-9823

constantinm@mybrcc.edu

Janet Daniel

Associate Professor

BRCC

201 Community College Drive

Baton Rouge, Louisiana 70806

225-216-8145

danielj@mybrcc.edu

Pedro Derosa

Louisiana Tech University

911 Hergot Avenue

Ruston, Louisiana 71272

(318) 257-5139

pderosa@latech.edu

LeAnn Detillier

Assistant Commissioner for Program

Administration

Board of Regents

Wendy Devall

Director, Disability Services

Baton Rouge Community College

201 Community College Drive

Baton Rouge, Louisiana 70806

225-216-8503

devalltw@mybrcc.edu

Brett Downer

Director of Marketing and Public

Relations

SOWELA Technical Community College

4915 W. Westridge Park

Lake Charles, Louisiana 70605

337-515-0942

brett.downer@sowela.edu

Kristen Dufauchard
Coordinator
Baton Rouge Community College
201 Community College Drive
Baton Rouge, Louisiana 70806
225-216-8239
dufauchardk@mybrcc.edu

Sharon Dunham
Centralized Payroll
LCTCS
2665 South Foster Drive
Baton Rouge, LA 70806
225-922-2393
sdunham@lctcs.edu

Andres Enriquez
HEP Coordinator
Louisiana Delta Community College
3158 Louisville Avenue
Monroe, Louisiana 71201
318-362-5031
aenriquez@ladelta.edu

Becky Etzel
Director of Student Services
River Parishes Community College
9697 Airline Hwy.
Sorrento, Louisiana 70778
225.675.5397
retzel@rpcc.edu

Curt Eysink
Executive Director
Louisiana Workforce Commission
Post Office Box 94094
Baton Rouge, Louisiana 70804
(225) 342-311
CEysink@lwc.la.gov

Adrienne Fontenot
Director, Adult Education Academics
LCTCS, WorkReady U
265 South Foster Drive
Baton Rouge, Louisiana 70806
225-308-4397
adriennefontenot@lctcs.edu

Lance Ford
Business Development Manager
Cisco
21444 E North Railroad St
Howe, Oklahoma 74940
408-894- 4451
lanford@cisco.com

Marie Frank
Chief Procurement Office
Louisiana State University
213 Thomas Boyd Hall
Baton Rouge, Louisiana 70803
225-578-2307
mfrank@lsu.edu

Holly French-Hart
Dean, Division of Liberal Arts
Bossier Parish Community College
6220 E. Texas Street
Bossier City, Louisiana 71111
318-678-6132
hfrench@bpcc.edu

Amber Gazave
ERP Student Services Specialist
LCTCS
8835 Pecan Tree Drive
Baton Rouge, Louisiana 70810
225-308-4450
ambergazave@lctcs.edu

Dwayne Grant
Coordinator of Career Pathways &
Social Media
Louisiana Community and Technical
College System
5150 Capitol Heights Apt 205
Baton Rouge, Louisiana 70806
225-308-4385
dwaynegrant@lctcs.edu

Michelle Grant
Professor of Business
BPCC
6220 E. Texas St., G-119
Bossier City, Louisiana 71111
318-678-6141
mgrant@bpcc.edu

George Grazioso
Assistant Director
Office of State Purchasing/Travel
1201 North Third Street, Ste 2-160
Baton Rouge, Louisiana 70804
225-342-8056
George.Grazioso@LA.GOV

Steve Greene
Vice President of Workforce Development
NCCER
13614 Progress Boulevard
Alachua, Florida 32615
(386) 518-6934
sgreene@nccer.org

Susan Guerrerro
Business Instructor
Fletcher Technical College
1407 Highway 311
Schriever, Louisiana 70395
985.448.7900
Susan.Guerrerro@fletcher.edu

Bob Hammack
Director, Workforce Development
Louisiana Delta Community College
7500 Millhaven Road
Monroe, Louisiana 71203
318.345.9286
bhammack@ladelta.edu

Natalie Harder
Chancellor
South Louisiana Community College
320 Devalcourt
Lafayette, Louisiana 70506
337-521-8959
natalie.harder@southlouisiana.edu

Jean Ann Hartzell
Vice President
Minzey Enterprises
41325 Highway 933
Prairieville, Louisiana 70769
225-622-4195
beis@eatel.net

Paul Heaton
Director, Center for Community College
Advancement
CASE
1307 New York Ave. NW, Suite 1000
Washington, District of Columbia 20005
202-478-5570
Heaton@case.org

Angela Hebert
Director of Admissions
Fletcher Technical Community College
1407 Highway 311
Schriever, Louisiana
angela.hebert@fletcher.edu

Jim Henderson
Chancellor
Bossier Parish Community College
6220 East Texas Street
Bossier City, Louisiana 71111
318-426-7104
jbhenderson@Bpcc.edu

Lisa Hibner
Director of the Career Center
Baton Rouge Community College
201 Community College Drive
Baton Rouge, Louisiana 70806
225-216-8244
hibnerl@mybrcc.edu

Scott Higginbotham
Coordinator of Developmental Education
Louisiana Delta Community College
7500 Millhaven Rd.
Monroe, Louisiana 71203
318-345-9232
shigginbotham@ladelta.edu

Peggy Hobensee
Kaplan University/Fletcher Technical
Community College
11 Touassic Lane
Woolwich, Maine 4579
207-389-4118
phobensee@kaplan.edu

Presenter Contact Information

Joshua Howard
Recruiter
Baton Rouge Community College
201 Community College Drive
Baton Rouge, Louisiana 70806
225-216-8554
howardj@mybrcc.edu

Jennifer Jackson
Associate Vice Chancellor for
Institutional Advancement
South Louisiana Community College
320 Devalcourt St.
Lafayette, Louisiana 70506
337-521-8997
jennifer.jackson@southlouisiana.edu

Edward Jenkins
Project Manager
CSRS, Inc.
6767 Perkins Road, Suite 200
Baton Rouge, Louisiana 70808
(225) 769-0546
jenkins@csrsonline.com

Raj Jindal
Information Technology Director
Louisiana Workforce Commission

Wendy Johnson
Director of Library Services
River Parishes Community College
PO Box 310
Sorrento, Louisiana 70778
225-675-0230
wjohnson@rpcc.edu

Melba Kennedy
Director of Strategic Initiatives
River Parishes Community College
9697 Airline Hwy.
Sorrento, Louisiana 70778
225.675.5397
mkennedy@rpcc.edu

Sandra Kinney
Assistance Vice President for Institutional
Research and Planning
LCTCS
265 South Foster Drive
Baton Rouge, LA 70806
sandrakinney@lctcs.edu

Eric Kulikowski
Managing Partner
Dare to Be Amazing
143 Harvest Ln
Harrison City, Pennsylvania 15636
724-744-1943
eric@daretobeamazing.com

Kristy Labello
Institutional Research Analyst
Board of Regents

Bridget Laborde
Student Affairs Officer
Northshore Technical Community
College
PO Box 489
Hammond, Louisiana 70404
985-543-4120
blaborde@northshorecollege.edu

Brian LaFleur
Program Manager
CSRS, Inc.
6767 Perkins Road, Suite 200
Baton Rouge, Louisiana 70808
(225) 769-0546
lafleur@csrsonline.com

April Lavergne
Connect to Success Coordinator
Northshore Technical Community
College
PO Box 489
Hammond, Louisiana 70404
985-549-5145
april.lavergne@northshorecollege.edu

Brady LeVrier
Professor Developmental Education
SLCC Acadian Campus
1933 West Hutchinson Ave.
Crowley, Louisiana 70526
337-788-7521
brady.levrier@southlouisiana.edu

Donalyn Lott, Ph.D.
Associate Professor
Nunez Community College
3710 Paris Rd.
Chalmette, Louisiana 70043
504-278-6290
dlott@nunez.edu

Claire Loup
Economic and Financial Education
Specialist, New Orleans Branch
Federal Reserve Bank of Atlanta
525 St. Charles Ave.
New Orleans, Louisiana 70130
504-593-3259
Claire.Loup@atl.frb.org

Derrick Manns
Vice President Academics
LCTCS
265 S. Foster Dr.
Baton Rouge, Louisiana 70608
225-308-4422
dmanns@lctcs.edu

Joe Marin
Director of Budget and Planning
LCTCS
265 S. Foster Drive
Baton Rouge, Louisiana 70806
225-308-4376
jmarin@lctcs.edu

Sean Martin
Executive Director
LCTCS, WorkReady U
265 South Foster Drive
Baton Rouge, Louisiana 70806
225-308-4390
seanmartin@lctcs.edu

H. Neil Matkin
Executive Vice President
LCTCS
265 South Foster Drive
Baton Rouge, Louisiana 70806
225-922-2373
nmatkin@lctcs.edu

Jamie May
PSE Coordinator
NTCC
1710 Sullivan Drive
Bogalusa, Louisiana 70427
985-732-6640
jamie.may@northshorecollege.edu

Trence McCoy
Instructor, Small Engines
Northwest Louisiana Technical College

Kay McDaniel
Director
CATC
3250 N. Acadian Thruway E.
Baton Rouge, Louisiana 70805
225-278-7669
kay.mcdaniel@catc.edu

Jennifer McMullen
Assistant Professor of English
BPCC
6220 East Texas St., F-245
Bossier City, Louisiana 71111
318-678-6357
jmcullen@bpcc.edu

Stanton McNeely
Director of Institutional Research &
Effectiveness
Fletcher Technical Community College
1407 Highway 311
Schriever, Louisiana 70395
985-448-7936
stanton.mcneely@fletcher.edu

James Mendez
Physics Instructor
Sowela Technical Community College
3820 Sen. J. Bennett Johnston Ave.
Lake Charles, Louisiana 70615
337-421-6593
james.mendez@sowela.edu

Darlene Miller
Executive Director
National Council of Workforce Education

Georgann Mire
Office Coordinator
Baton Rouge Community College
201 Community College Drive
Baton Rouge, Louisiana 70806
225-266-1148
gmire@mireconsulting.net

Mamta Misra
Business Program Coordinator
SLCC
320 Devalcourt St.
Lafayette, Louisiana 70806
337-521-9001

Juana Moreno
Louisiana State University
216 Johnston Hall
Baton Rouge, Louisiana 70803
225-578-7586
moreno@phys.lsu.edu

Charles Moniotte
Chairman Workforce Investment
Council

Jade O'Dell, Ph.D.
Associate Professor
Nunez Community College
3710 Paris Rd.
Chalmette, Louisiana 70043
504-278-6297
jodell@nunez.edu

Savitha Pinnepalli
Assistant Professor, Computer Science
River Parishes Community College
7384 John Leblanc Blvd
Sorrento, Louisiana 70778
225-772-4371
spinnepalli@rpcc.edu

Nan Poppe
Consultant and LA Accelerating
Opportunity Initiative Coach
503-367-0135

Cindy Poskey
Dean
South Central Louisiana Technical College
River Parishes Campus

Delene Rawls
DeltaLINC Assistant Director
Louisiana Delta Community College
3158 Louisville Ave.
Monroe, Louisiana 71201
318-362-5034
drawls@ladelta.edu

Delene Rawls
Assistant Director and Grants Manager
Louisiana Delta Community College
3158 Louisville Avenue
Monroe, Louisiana 71201
318-362-5034
drawls@ladelta.edu

Sara Reed
Academic Seminar Coordinator
Louisiana Delta Community College
7500 Millhaven Road
Monroe, Louisiana 71203
318-345-9219
sreed@ladelta.edu

Rhonda Rhodes
ABE Lead Instructor
Louisiana Delta Community College
7500 Millhaven Road
Monroe, Louisiana 71203
318-362-5032
rrhodes@ladelta.edu

Jeff Rials
Director, Adult & Technical Education
Research & Reporting
LCTCS, WorkReady U
265 South Foster Drive
Baton Rouge, Louisiana 70806
225-308-4391
jrials@lctcs.edu

Erin Rice
Instructor, Business and Social Sciences
Baton Rouge Community College
201 Community College Drive
Baton Rouge, Louisiana 70806
225-216-8009
ricee@mybrcc.edu

Pamela Rice
Interim Director, Office of Contractual
Review
Baton Rouge Community College
201 Community College Drive
Baton Rouge, Louisiana 70806
225-342-7097
pamela.rice@la.gov

Daniel Roberts
Vice Chancellor of Student Learning &
Development
Northshore Technical Community
College
1710 Sullivan Drive
Bogalusa, Louisiana 70427
985-514-0090
daniel.roberts@northshorecollege.edu

Richard Robins
Academic Advisor
BPCC
6220 East Texas
Bossier City, Louisiana 71111
(318) 272-4403
rrobins@bpcc.edu

Stephanie Rogers
Director
BPCC
6220 East Texas Street
Bossier City, Louisiana 71111
318.678.6285
Srogers@bpcc.edu

James Rolfes
Associate Professor, Business
River Parishes Community College
7384 John Leblanc Blvd
Sorrento, Louisiana 70778
225-675-8270
jrolfes@rpcc.edu

Ken Roush
ERP Finance Specialist
LCTCS
4645 St. Paul Boulevard
Rochester, New York 14617
225-308-4457
kenroush@lctcs.edu

Elmy Savoie
Executive Director of Institutional
Advancement & External Relations
Fletcher Technical Community College
1407 Highway 311
Schriever, Louisiana 70360
985-860-1220
elmy.savoie@fletcher.edu

Jimmy Sawtelle
Sr. Vice President for Workforce
Solutions, Star Jobs
LCTCS
265 South Foster Drive
Baton Rouge, Louisiana 70806
225.308.4428
jsawtelle@lctcs.edu

Presenter Contact Information

Bruce Schneider
Director of Sales Engineering and Analytics
Ambassador College Bookstores
445 Broad Hollow Road, Suite 206
Melville, New York 11747
631-770-1010
bschneider@ambassadorbookstores.com

Susana Schowen
Workforce Initiatives Manager
LED FastStart
445 North Blvd Ste 210
Baton Rouge, Louisiana 70802
225-588-9944
susana.schowen@la.gov

Kaye Sharbono
DeltaLINC Director
Louisiana Delta Community College
3158 Louisville Ave
Monroe, Louisiana 71201
318-362-5025
ksharbono@ladelta.edu

Chris Shaw
Instructor
BPCC
6220 East Texas
Bossier City, Louisiana 71111
(318)678-6243
cshaw@bpcc.edu

Brian Shmaefsky
Professor of Biology & Service Learning
Coordinator
Lone Star College – Kingwood
HSB 202V, 20000 Kingwood Dr
Kingwood, Texas 77339-3801
281-312-1609
Brian.R.Shmaefsky@lonestar.edu

Shelia Singletary
Dir of Institutional Research & Effectiveness
Northshore Technical Community College
1710 Sullivan Dr
Bogalusa, Louisiana 70427
985-516-4139
ssingletary@northshorecollege.edu

James Smith
Dir. of Institutional Effectiveness
Louisiana Delta Community College
243 Walnut Creek
Simsboro, Louisiana 71275
318-243-8524
jpsmith@ladelta.edu

Raye Nell Spillman
Director of Adult Education Services
LCTCS, WorkReady U
265 South Foster Drive
Baton Rouge, Louisiana 70806
225-308-4393
rspillman@lctcs.edu

Kristine Strickland
Vice President for Student Services and Student Financial Assistance
LCTCS 265 South Foster Dr.
Baton Rouge, Louisiana 70806
504-915-2820
kristinestrickland@lctcs.edu

Paul Taylor
Regional Director
National Student Clearinghouse
4006 Brandi Court
Austin, Texas 78759
859-492-0655
ptaylor@studentclearinghouse.org

Sandra Taylor
Career Center
Baton Rouge Community College
201 Community College Drive
Baton Rouge, Louisiana 70806
225-216-8244

Sarah Mary Toce
Head Trainer/Gym Manager
Exerfit Family Fitness
7222 Bluebonnet Blvd.
Baton Rouge, Louisiana 70810
225-769-4363
sarahmary@exerfitbr.com

Tammy Toups
Assistant Director
Office of State Purchasing/Travel
1201 North Third Street, Ste 2-160
Baton Rouge, Louisiana 70804
225-342-8053
tammy.toups@la.gov

Leigh Townsend
Louisiana State University
216 Johnston Hall
Baton Rouge, Louisiana 70803
(225) 578-5381
lgalat1@tigers.lsu.edu

Shelli Ulrich
Director of Development & Alumni Affairs
BPCC
6220 East Texas
Bossier City, Louisiana 71111
sulrich@bpcc.edu

Brian Vandegrift
Executive Vice President, Innovation
Venyu
7127 Florida Blvd
Baton Rouge, Louisiana 70806
225-214-3849
brian@venyu.com

Andrea Vidrine
Associate Professor, Business
Baton Rouge Community College
201 Community College Drive
Baton Rouge, Louisiana 70806
225-216-8124
vidrinea@mybrcc.edu

Bruce Waguespack
Executive Director for Economic Development and Workforce Solutions
Baton Rouge Community College
201 Community College Drive
Baton Rouge, Louisiana 70806
225-216-8440
waguespackb@mybrcc.edu

Jan Waguespack
Manager for LCTCS
AT&T
3854 American Way, Room F100
Baton Rouge, Louisiana 70816
225-298-8515
jw1133@att.com

William Wainwright
Chancellor
Northshore Technical Community College
1710 Sullivan Drive
Bogalusa, Louisiana 70447
985-732-6640
william.wainwright@northshorecollege.edu

Anthony Walesby
Associate Vice Provost for Academic and Faculty Affairs & Senior Director of the Office of Institutional Equity
University of Michigan
Ann Arbor, Michigan
734-763-0235

Don Wheeler
Assoc. Prof. Math
Louisiana Delta Community College
7500 Millhaven
Monroe, Louisiana 71203
318-345-9177
dwheeler@ladelta.edu

Lisa Wheeler
Director of Institutional Research and Grants
Bossier Parish Community College
Bossier City, Louisiana 71111
318.678.6206
lwheeler@bpcc.edu

Vickie Wheelis
Workforce Coordinator, DeltaLINC
Louisiana Delta Community College
3158 Louisville Avenue
Monroe, Louisiana 71201
318.362.5033
vwheelis@ladelta.edu

John White
Vice President, Product Management
Higher One
115 Munson Street
New Haven, Connecticut 6511
203-776-7776 x4174
ldudley@higherone.com

Brian Wier
Director, Campus Relations
Neebo

Gerald B. Williams
President, Aspen University
720 S Colorado Boulevard, Suite 1150N
Denver, Colorado 80246
gwilliams@aspen.edu

Mark Workman
Collaboration Product Specialist
Cisco
500 Northbridge Road, Suite 700
Atlanta, Georgia 30350
408 894 1756
marworkma@cisco.com

Judith Wright
Business Office Administration
South Central Louisiana Technical College
River Parishes Campus

Esperanza Zenon
Assistant Professor
River Parishes Community College
208 Third Street
Donaldsonville, Louisiana 70346
225-253-1464
ezenon@rpcc.edu

Sara Zimmerman
Executive Director
LOUIS Library Network
Room 200 Frey Computing Services Center
Baton Rouge, Louisiana 70803
225-578-3705
sara@lsu.edu



ASPEN
UNIVERSITY

www.aspen.edu

Aspen University is proud to partner with the LCTCS to provide
a world class education at an affordable cost to students.

Aspen University Schools

School of Nursing - School of Management - School of Professional Studies - School of Education - School of Information Technology - College of Arts & Sciences

Thank You

to the LCTCS 2013 Annual Conference Support Team!

Leah Goss, Senior Vice President of System Advancement, LCTCS

Conference Director

Ashley Lindsay, Director of Development, LCTCS

Conference Lead Creative Designer

Ginger LeBlanc, Public Relations Coordinator/Graphic Designer, LCTCS

Conference Planning Team

Bonni Blouin, Coordinator of Board Services, LCTCS

Dwayne Grant, Coordinator of Career Pathways and Social Media

Tisha McKinney, Development Coordinator, LCTCS

Conference Coordinators

Jill Kidder, In-House Creative

Robert Kidder, In-House Creative

Darienne Mobley, In-House Creative

Angie Burley, In-House Creative

Volunteers

Baton Rouge Community College

Dominic Arman	Stacia Hardy	Dr. Teresa Jones	Dr. Divina Miranda	Rosie Toney
Michael Beauford	Helen Harris	Victoria Jackson-Dixon	Susan Nealy	Regina Villarreal
Cindy Decker	Jason Haynes	Laddawan Kongchum	Misty O'Connell	
Ethel Germany	Lisa Hibner	Dr. Albertha Lawson	Angela Pursley	
Tuesday Gray	Faye Hinton	Jennifer Linscott	Nicole Robert	
Sandra Guzman	Angela Jackson	Patricia McClanahan	George Thompson	

River Parishes Community College

Marla Erwin	Tom Henson	Jane LeBlanc	Tracy Stedman
Sharon Flanagan	Sharon LaGarde	Donna Newsome	Kim Stephens
Dianna Gilbert	Harold 'Skip'	Anna Neunaber	Dona Whittington
Whitley Garrison	LaGarde	Nick Ory	Bea Williams
Michael Heath	Robin Landry	Savitha Pinnepali	Esperanza Zenon

LCTC System Office

Anthony Brown	Ben Knapp	Michele Nardini
Brenda Brown	Jean Ann Kozlowski	Jawan Ross
Ingrid Cook	Mack McBride	Shannon Sedberry
Sheila Duplechain	Helen Mitchell	Jimmy Sawtelle (DJ)

The BRCC Jazz Ensemble, Directed by Eric Baskin

Special Thanks to:

Video Choreography led by Steve Mitchell, Executive Director, Public Relations & Performing Arts, along with:

Johnell Joseph	Jen Guitreau	Dwight Green	Charles Gremillion
Darolyn Blanchard	Cristina Boone	Virginia Mouro	Tanner Dean
Aaron Moses	Charlotte Eulaerts	Kendra Revish	The Entire Entertainment
Susan Coates	Taylor Barras	Hollie Harrison	Technologies Department
Markita S. Thomas	Natalie Boone	Kenneth Paynes	Shawn Lafleur (Assistant Athletic
Jamal Williams	Darolyn Mahon	Porcha Maten	Director)

Poster Design provided by BPC's Communication Media Instructor, Pat Divietro, Division of Communication & Performing Arts
Task Force Team Members Rick Bateman, SOWELA; Tammy Brown, CATC; Daisy Cunningham, SCLTC; Melissa Ducote, LDCC; Lana Fontenot, SLCC; Carol Gniady, Delgado; Tracy McGill, BPC; Laurie Morrow, NWLTC; Misty O'Connell, BRCC; Nick Ory, RPCC; Cheryl Probst, CLTCC; Elmy Savoie, Fletcher; Teresa Smith, Nunez; Amy Valentine, NSTCC

Thank You

to our 2013 Sponsors, Exhibitors and Partners!

Avondale Shipbuilding
Presenting Sponsor

CSRS
State of the System Address and Luncheon

AT&T
Cyber Cafe Sponsor

NCCER Build Your Future
Grand Opening Plenary Session

NEEBO
Grand Opening Networking Session and Reception

Pearson Learning Solutions
Awards Luncheon

Sisung Group
President's Networking Session and Reception

Higher One
Registration Sponsor

Aspen University
Name Badge Sponsor

Ambassador College Bookstores
Peer Group Networking Session/Meeting Room Pkg.

Venue
Bag Sponsor

National Student Clearinghouse, Cengage, Global Data Systems and Cisco
Refreshment Breaks

Jones Walker and Breazeale, Sachse and Wilson, LLP
Breakfasts

Louisiana Lottery
Corporate Sponsorship

Walden University
Meeting Room Sponsor

Biometric Signature ID; Edmentum, Inc.; eScience Labs; Lincoln Electric
Northwestern State University;
Meeting Room Package

ACT, Inc.; Alliance Bus Group; Bits Technical; Canvas by Instructure; CDX Automotive; Cheniere Energy; Computer Comforts, Inc.; CTB/McGraw Hill; EDS; Houghton Mifflin Harcourt; Howard Technology Solutions; Ingram-Vital Source; Intech; Jester Company; Louisiana School Equipment; McGraw-Hill Education; National Teachers Associates; Paradigm Publishing; Proctor U; Scantron; St. Elizabeth's Foundation; Strayer University; Tooling U; University of Phoenix; Upper Iowa University
Exhibitor / Presenters

Allen, Green & Williamson, LLP • The College Board
Partners

ACTE; CDX Automotive; The College Board; MAVCC
Packet Stuffers

KEEP CALM AND BE A
CHANGE AGENT



Louisiana
Community
& Technical
College
System

*Changing Lives,
Creating Futures*