

First-Time Freshmen Enrollment Fall 1999 to Fall 2008

	BRCC	BPCC	Delgado	LDCC	Nunez	RPCC	SLCC	FTCC	STCC	LTC	LCTCS
Fall 1999	861	779	1,945		437		371				4,393
Fall 2000	847	902	2,560		694	143	297				5,443
Fall 2001	1,307	962	2,661		397	206	324				5,857
Fall 2002	1,278	872	2,784	145	423	239	268				6,009
Fall 2003	1,500	912	2,902	201	475	244	351	397	153	4,059	11,194
Fall 2004	1,582	908	2,823	306	418	193	336	490	413	4,666	12,135
Fall 2005	1,543	1,244		314		250	579	417		3,176	7,523
Fall 2006	1,401	1,134	1,973	279	133	262	667	372	774	4,131	11,126
Fall 2007	1,541	1,284	2,361	349	182	242	575	523	391	4,352	11,800
Fall 2008	1,691	1,070	2,530	517	149	260	818	359	454	3,833	11,681

Source:

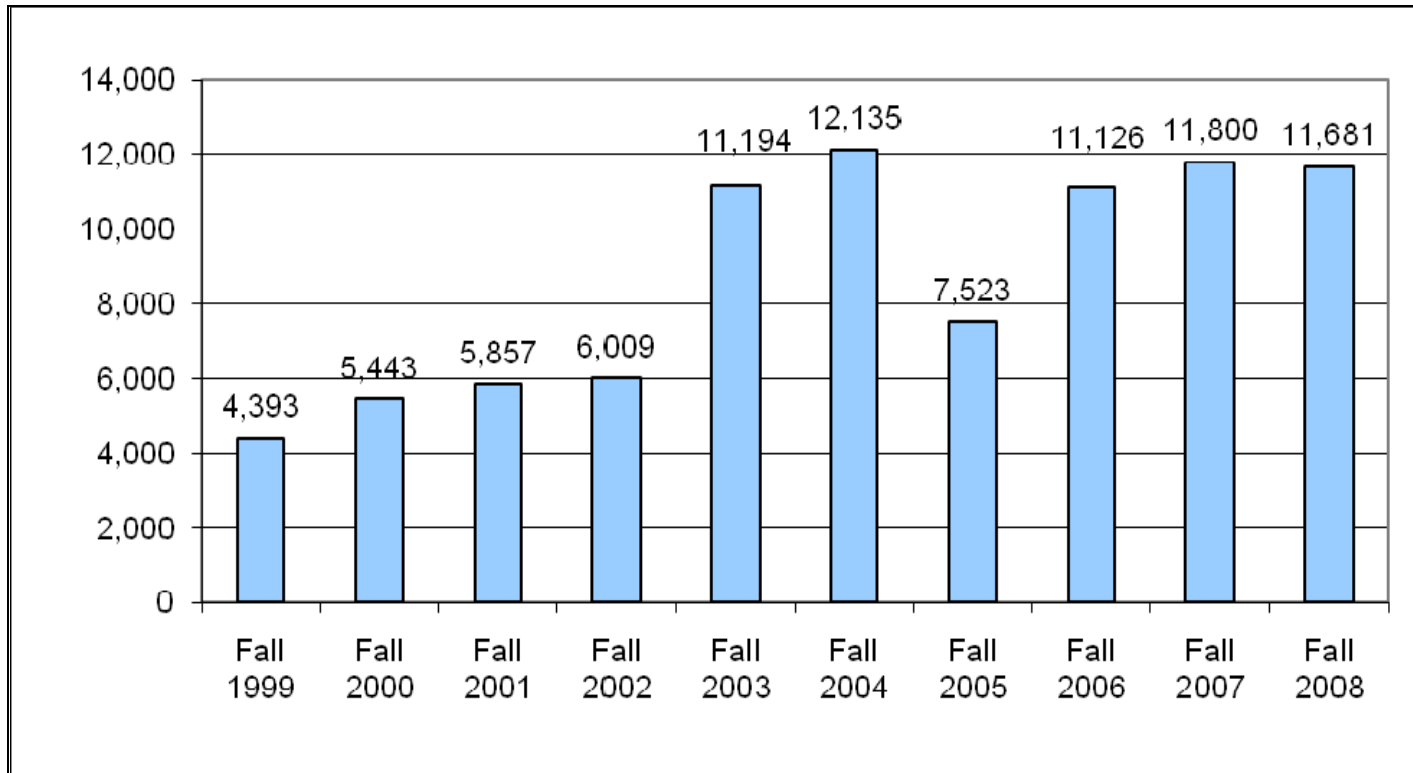
Louisiana Board of Regents' - Statewide Student Profile System (SSPS)

Notes:

1. RPCC began submitting data to the SSPS in the 2000-2001 academic year.
2. LDCC began submitting data to the SSPS in the 2002-2003 academic year.
3. FTCC, STCC, and the LTC began submitting data to the SSPS in the 2003-2004 academic year.
4. Fall 2005 – Due to the effects of Hurricanes Katrina or Rita, the following institutions were either closed, relocated, or significantly curtailed their operations for the fall 2005 semester: DCC, NCC, STCC and LTC Jefferson, Sidney Collier, Slidell, Sullivan, and West Jefferson Campuses. The aforementioned institutions were excused from the Fall 2005 Board of Regents reporting requirements.

Office of Institutional Research

Louisiana Community and Technical College System First-Time Freshmen Fall 1999 to Fall 2008



Source:

Louisiana Board of Regents' - Statewide Student Profile System (SSPS)

Notes:

1. RPCC began submitting data to the SSPS in the 2000-2001 academic year.
2. LDCC began submitting data to the SSPS in the 2002-2003 academic year.
3. FTCC, STCC, and the LTC began submitting data to the SSPS in the 2003-2004 academic year.
4. Fall 2005 – Due to the effects of Hurricanes Katrina or Rita, the following institutions were either closed, relocated, or significantly curtailed their operations for the fall 2005 semester: DCC, NCC, STCC and LTC Jefferson, Sidney Collier, Slidell, Sullivan, and West Jefferson Campuses. The aforementioned institutions were excused from the Fall 2005 Board of Regents reporting requirements.