



THE NAVIGATOR

March 2013

The Quarterly
Newsletter for
Louisiana's Adult
Education Network

Volume 1, Issue 1



A Message from the WRU Executive Director

Shortly after taking office in 2009, President Obama proposed an ambitious goal for our nation to have “the best educated, most competitive workforce in the world by 2020” so that the U.S. could retain its preeminence as a global leader. Adult basic education is an integral component of this pipeline to reach this ambitious goal, and Louisiana is leading the way through its WorkReady U vision, transitional activities, and career pathway implementation. The WorkReady U vision is built on the notion of recasting the expectations of our most important natural resource - our people. The WorkReady U mission is to prepare our students with the skills necessary to compete for family sustainable employment. The 600,000 working age adults in Louisiana without a high school credential need an opportunity to obtain the skills necessary to achieve a better life. By placing the responsibility for adult education with the LCTCS, creating clear pathways into and through career and technical

education programs that lead to life-sustaining jobs, Louisiana has radically changed its adult education delivery model and can now substantially increase the number of people who are part of the middle class.

It is an unprecedented time in our profession. Numerous action points that will identify the role and scope of adult basic education into the foreseeable future are quickly approaching Federal and State Leadership. Over the next few months, many decisions will be made in Louisiana that will further align our adult basic education delivery model with the long-term WorkReady U vision and the needs of the students we serve in our programs.

Sincerely,

Sean Martin

Executive Director of WorkReady U

Extension of the Louisiana State Plan for Adult Education

Pending the Reauthorization of Workforce Investment Act (WIA) of 1998, the U.S. Department of Education, Office of Vocational and Adult Education (USDE/OVAE) requires that Louisiana have an approved Extension of the State Plan for Adult Education in order to receive federal adult education funds for FY 2013-2014. The Louisiana Community and Technical College System (LCTCS), WorkReady U (WRU) will propose the following updates to the LA State Plan to the Governor for approval:



A. Funding Eligible Providers:

Renewal applications will be released by April 1st. Renewal for multiple years will depend on the WRU program's success in meeting the goals set forth in its application and in meeting the minimum standards established by WRU and through Performance Measures. Programs that did not meet minimum standards in FY13 will be expected to demonstrate and document substantial improvement toward meeting those standards. Using the approved statewide data management system, monitoring results, and other documentation, WRU will determine and apply requirements for program improvement in the subsequent grant cycles. Minimum standards will be determined initially based on data collected during FY13 and will be raised with each new grant cycle. Programs that do not demonstrate and document substantial improvements during each year of the multi-year grant cycle may not be eligible to receive funding in subsequent years of the cycle.

The Louisiana Community and Technical College Board of Supervisors will make the final decision regarding the acceptance/rejection of all proposals.

B. WRU Regional Centers of Excellence:

State leadership funds will be dedicated each year to provide the establishment of regional centers. Technology as a tool for teaching and learning in the adult education and literacy programs will be a center focus. Funding will be provided over the multi-year grant cycle, depending upon sufficient outcome data.

C. Professional Development:

Professional development will focus on the needs of individual practitioners. WorkReady U (WRU) will require program staff to attend focused trainings and encourage additional activities that will be beneficial to both the individual's professional growth and the program's improvement. Local program directors shall encourage staff to attend state-approved professional development activities and provide reasonable support in the program budget.

D. Annual Evaluation of Adult Education and Literacy Activities:

Desk Monitoring: Desk monitoring relies primarily on data that is collected and reported on a monthly basis by the local programs in the statewide data management system. Using a structured format, state staff will review the data quarterly to provide technical assistance, determine risk-assessment, and promote program improvement.

Programmatic/Fiscal Onsite Monitoring: Programs are identified for onsite monitoring through a comprehensive risk analysis based on the following factors: (1) desk monitoring; (2) need to verify data quality and program expenditures; (3) consistent low performance on NRS indicators in several categories; (4) prospective noncompliance with grant requirements identified through review of programmatic and fiscal reports, or ongoing communications with the program; (5) unresolved audit findings; (6) ongoing lack of progress in resolving required actions from prior monitoring visit; (7) significant staff turnover in the program; and (8) recent or newly established programs.

The goal for State onsite monitoring visits are to: (1) ensure that programs meet AEFLA requirements; (2) improve the quality of federally-funded activities; (3) provide assistance identifying and resolving accountability problems; and (4) ensure the accuracy, validity, and reliability of data collection and data reporting as well as policies and procedures for program accountability.



REGIONAL CENTERS OF EXCELLENCE



On March 1st, Region 4 held a Supervisor’s Meeting at Capital Area Technical College-Baton Rouge Campus to discuss future professional development opportunities for the region. Representatives from Ascension, East Baton Rouge, Iberville, Pointe Coupee, West Baton Rouge, West Feliciana, Livingston, and Washington Parishes attended the meeting to plan a calendar of activities for the region which includes workshops and speakers covering a variety of topics such as GED 2014, content area teaching strategies, Student Achievement in Reading (STAR), Vocational

Rehabilitation, Google +, computer technology training for teachers, and improved data entry for LACES. The topics were a result of a survey conducted in January along with the supervisors’ feedback. Sean Martin and Jeff Rials from the LCTCS staff shared updates on LACES data and provided WRU suggestions for the supervisors. The calendar of activities will be conducted April through September offering online meetings and workshops held at Capital Area Technical College.

IN THE SPOTLIGHT Regional Centers of Excellence

Region 1
Erin Landry
Delgado Community College

Region 2
Janet Tassin
Iberville Parish Consortium

Region 3
Marilyn Schwartz
Terrebonne Parish Adult Education

Region 4
Robin Olivier
Lafayette Parish Adult Education

Region 5
Tommeka Semien
Literacy Council of Southwest LA

Region 6
Adrienne Fontenot
Central Louisiana Technical Community College

Region 7
Shelli Ulrich
Bossier Parish Community College

Region 8
Kaye Sharbono
Louisiana Delta Community College

Lex Williamson

*Literacy Council of Southwest Louisiana
Graduate and Sowela Student*

Student Success Story

My name is Lex Williamson. I am 31 years old, and I dropped out of high school at the age of 17 because I was not motivated and chose to follow the wrong crowd. Growing up I got into trouble and it finally caught up with me, I received a felony charge and was sent to prison. I spent a few years in prison, and decided that there must be something more to life. I decided to try to get my GED while I was in jail. I did not get the chance to complete my GED when I was in jail, but as soon as I was released I saw a commercial for the "Work Ready U" program. I figured that I may as well give it a try.

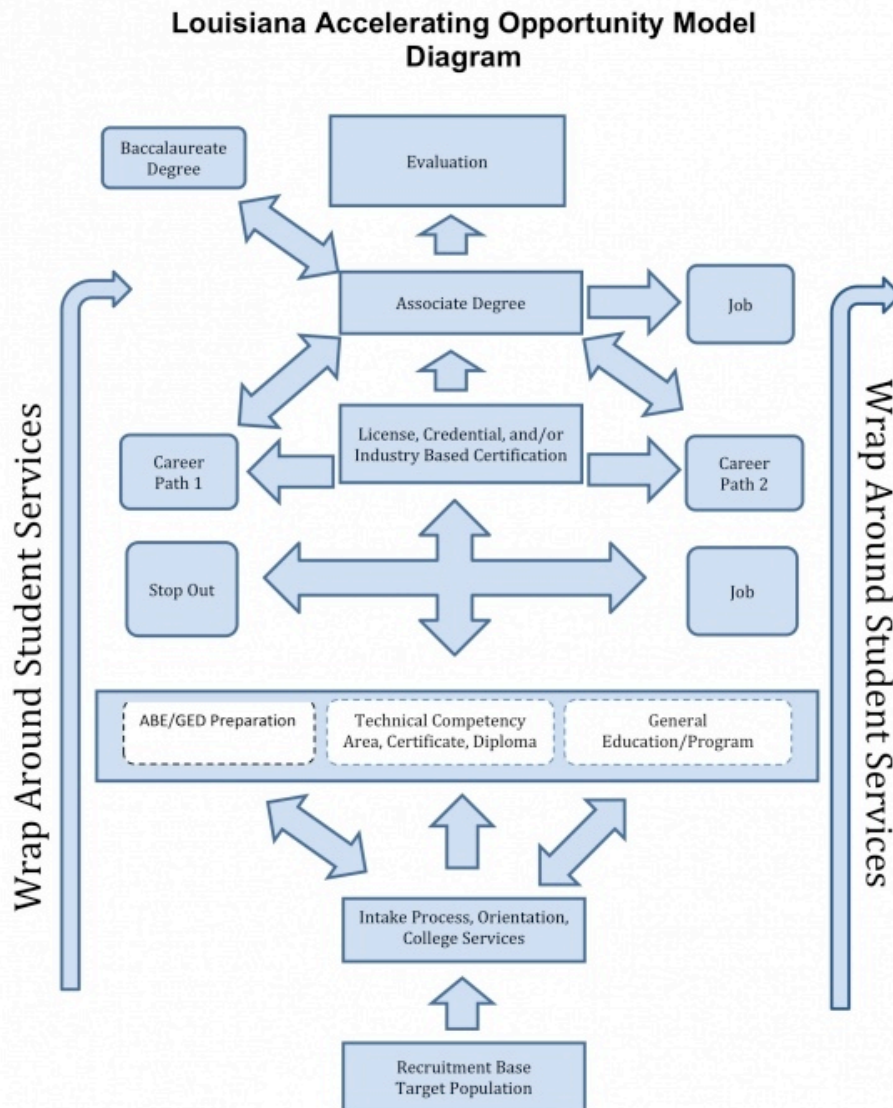


When I enrolled in the WRU program and began classes I continued to tell my teachers and the staff that I just wanted my GED. I did not want to go to college. I just wanted to work. Close to the end of the semester, I had obtained my GED. During the semester, I noticed that other students were asking me for assistance in the computer course as well as math. I didn't even realize that I was actually good at it, but the instructor and the staff noticed and I was once again encouraged to give college a try.

After the semester was over I continued to think about what the staff at the Literacy Council told me " You are smart, and we believe in you Lex please consider going to college." After hearing, "We believe in you Lex" and "You CAN do college Lex" I began to think maybe I can do it. I then made the decision to enroll in Sowela Technical Community College and I am now in my third semester in the Industrial Electrician program.

I am also working at the Literacy Council through the workstudy program at Sowela. Through the workstudy program, I have been tutoring students and I have become a role model for students who think, there is no way they can go to college. I have shared my story with as many students that I can and hopefully I can encourage or motivate them. I always tell them, "It takes hard work and dedication, but if Lex can do it, you can do it".

Accelerating Opportunity in Louisiana



Louisiana is one of seven states participating in Jobs for the Future's Accelerating Opportunity (AO): A Breaking Through Initiative. Through the [AO Initiative](#), adult learners in Louisiana have the opportunity to earn the credentials and skills they need to get and succeed in family-sustaining jobs. Each AO college offers at least two career pathways for students to enter while working towards secondary completion.

Expanding on best practices and concepts from the AO project is the U.S. Department of Labor's Trade Adjustment Assistance Community College and Career Training Initiative (TAACCCT). [TAACCCT](#) colleges instituted technology pathways for adult learners to enter while working towards secondary completion.

AO & TAACCCT Sites

- Louisiana Delta Community College (AO & TAACCCT)
- Delgado Community College (AO & TAACCCT)
- Bossier Parish Community College (AO & TAACCCT)
- Baton Rouge Community College & The Greater Baton Rouge Literacy Coalition (AO)
- Fletcher Technical Community College & Terrebonne Parish Adult Education (AO)
- Central Louisiana Technical Community College (AO)
- Northwest Louisiana Technical College & Sabine Parish Adult Education (AO)
- Nunez Community College & St. Bernard Parish Adult Education (AO)
- Sowela Technical Community College & The Literacy Council of Southwest Louisiana (AO)
- South Louisiana Community College (TAACCCT)



LACES Training Dates

Tuesday, April 9th -
Delta Community College
3158 Louisville Ave.
Monroe, LA 71201

Wednesday, April 10th -
South Louisiana Community College
320 Devalcourt St.
Lafayette, LA 70506

Thursday, April 11th -
Louisiana Technology Park
7117 Florida Blvd.
Baton Rouge, LA 70806

Friday, April 12th -
Delgado Community College
Jefferson Site
5200 Blair Dr.
Metairie, LA 70001

Data Matters

WebEx sessions provide a relatively new method for WRU and local program staff to examine data simultaneously. This medium allows for a data review and discussion in which supervisors, lead instructors, and data entry personnel can review programmatic data in real-time. The goal is for participants to make connections between data entry and review, program management, and instructional practices. If you are interested in scheduling a data review session please contact WRU staff.

LACES training will be offered at four locations across the state next month.

Registration information will be forthcoming.



Did You Know?

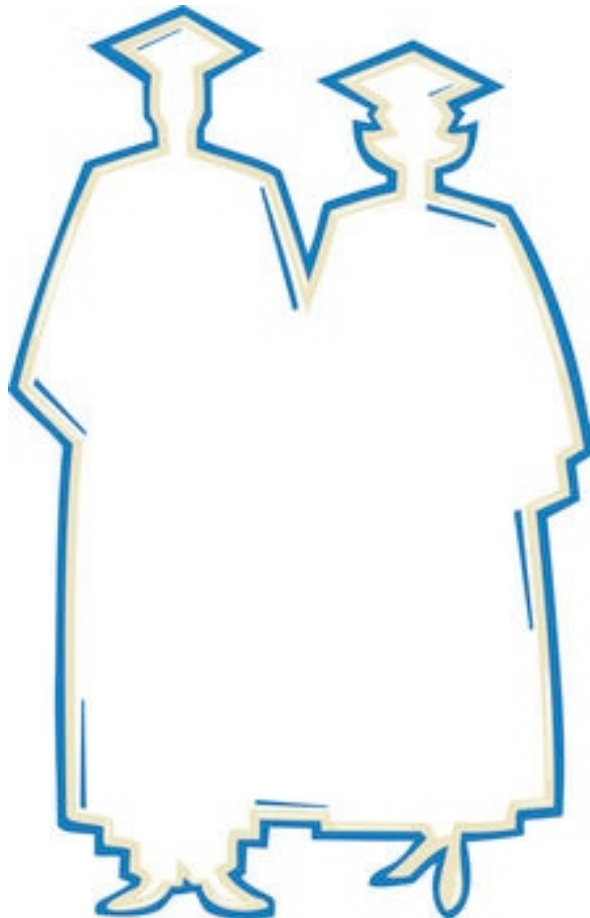
It is only 10 months until the new High School Equivalency Test is released.

[2002 Series Closeout Campaign Information](#)

[GEDTS Accommodation Information](#)

Looking for some information on Common Core? Check out this report commissioned by OVAE.

[College and Career Readiness Standards for Adult Education](#)



The Quarterly
Newsletter for
Louisiana's Adult
Education
Network

Volume 1, Issue 1