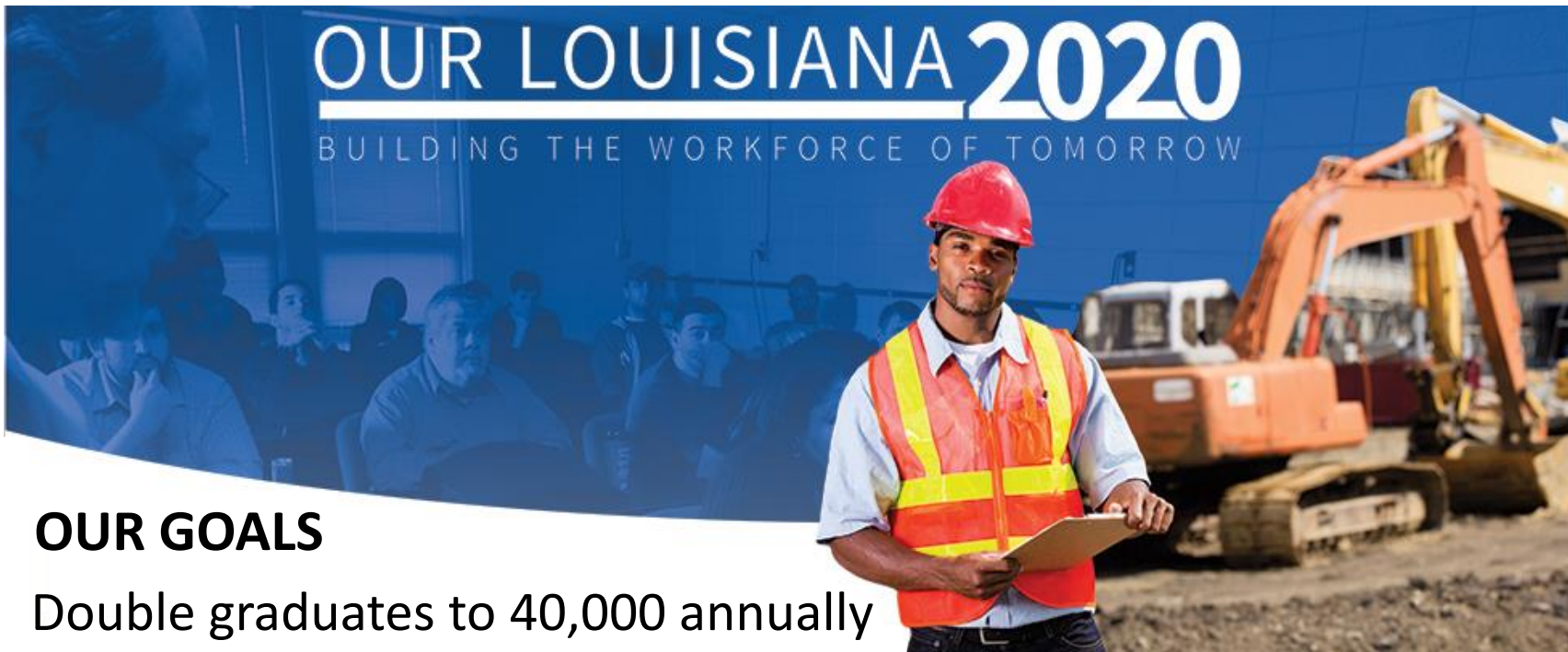


OUR LOUISIANA 2020

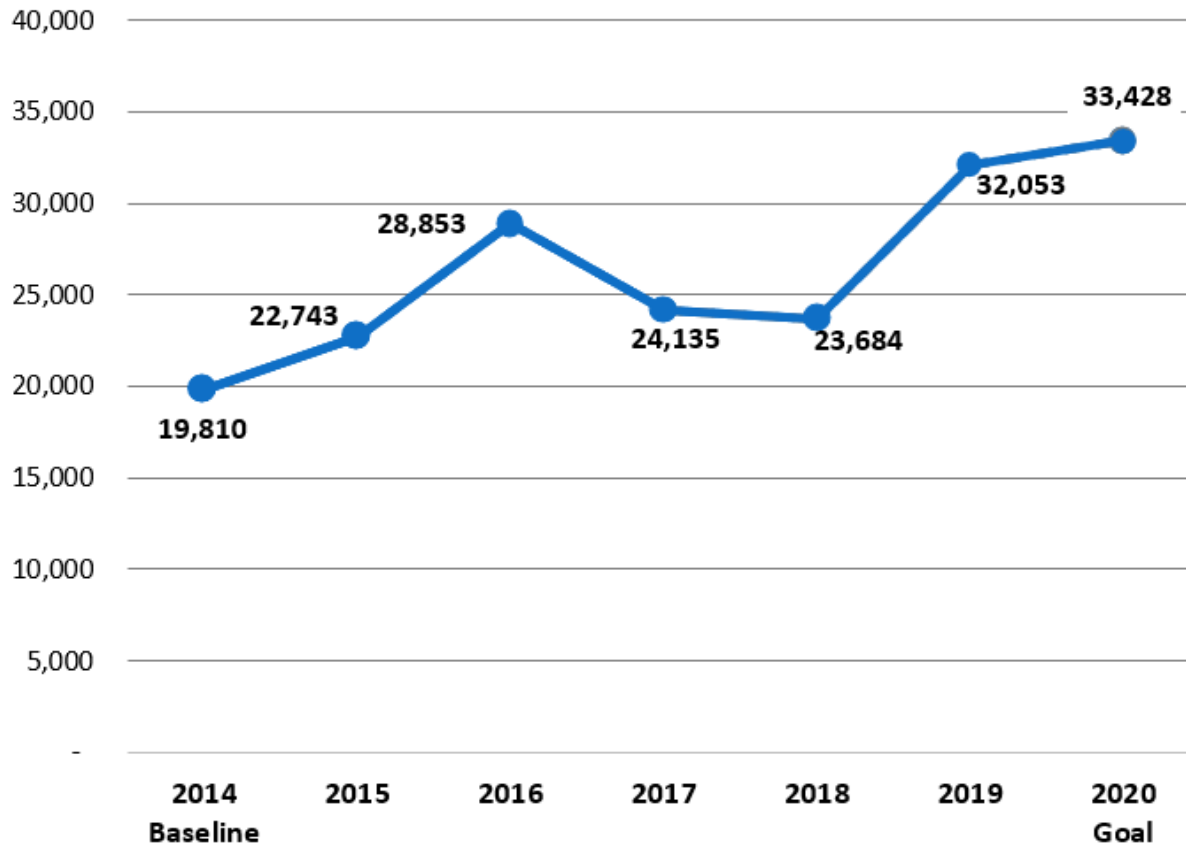
BUILDING THE WORKFORCE OF TOMORROW



OUR GOALS

- Double graduates to 40,000 annually
- Double earnings of an annual graduating class to \$1.5 Billion
- Quadruple student transfers to universities to 10,000 annually
- Double students served to 325,000 annually
- Quadruple partnerships with businesses to 1,000 annually
- Double foundation assets to \$50 million

GOAL 1: DOUBLE GRADUATES



Quick Facts

- 19,462 credit graduates (+13%)
- 15,083 earned an Industry Based Certification (IBC) (-5%)

2/3 of graduates are aligned with LWC 4- and 5-Star Jobs

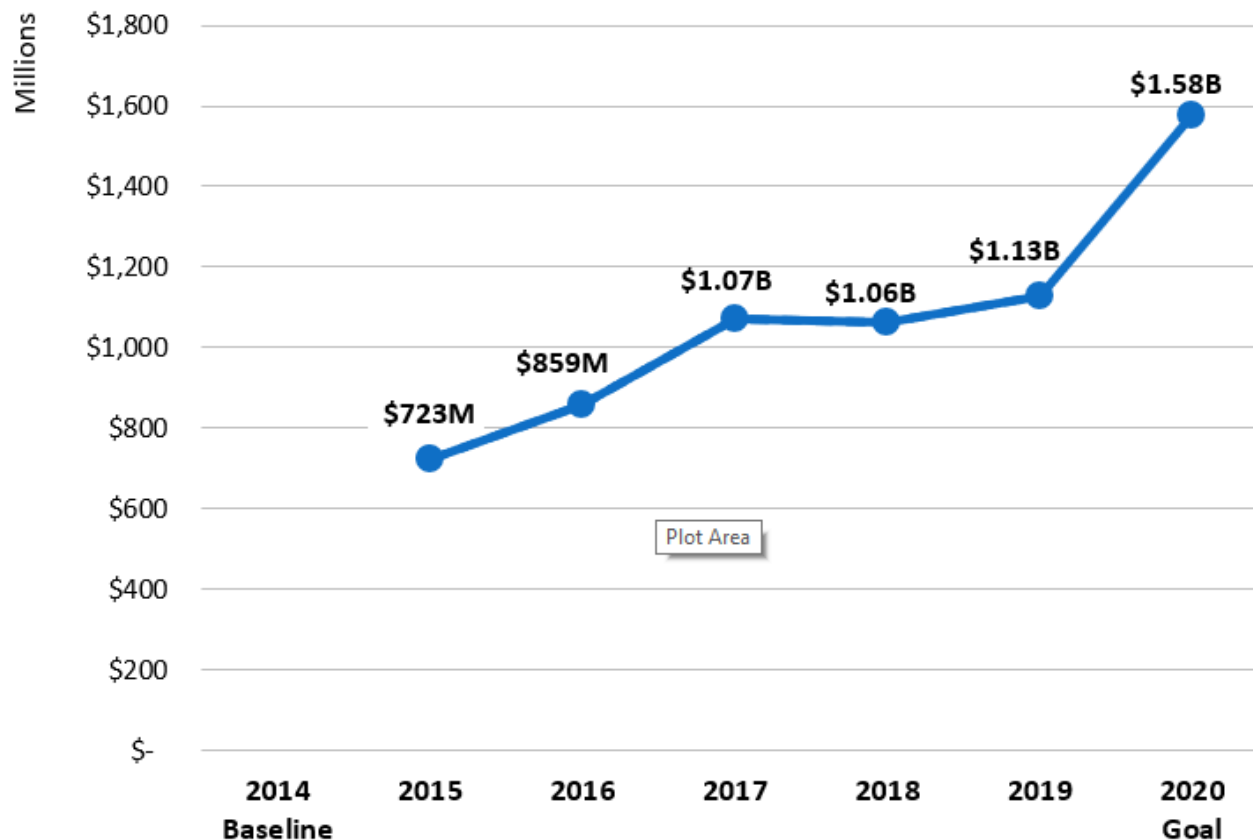
2019 Report

- 17,180 credit graduates
- 15,876 earned an IBC

2018 Report

- 15,176 credit graduates
- 8,777 earned an IBC

GOAL 2: DOUBLE GRADUATE EARNINGS



Quick Facts

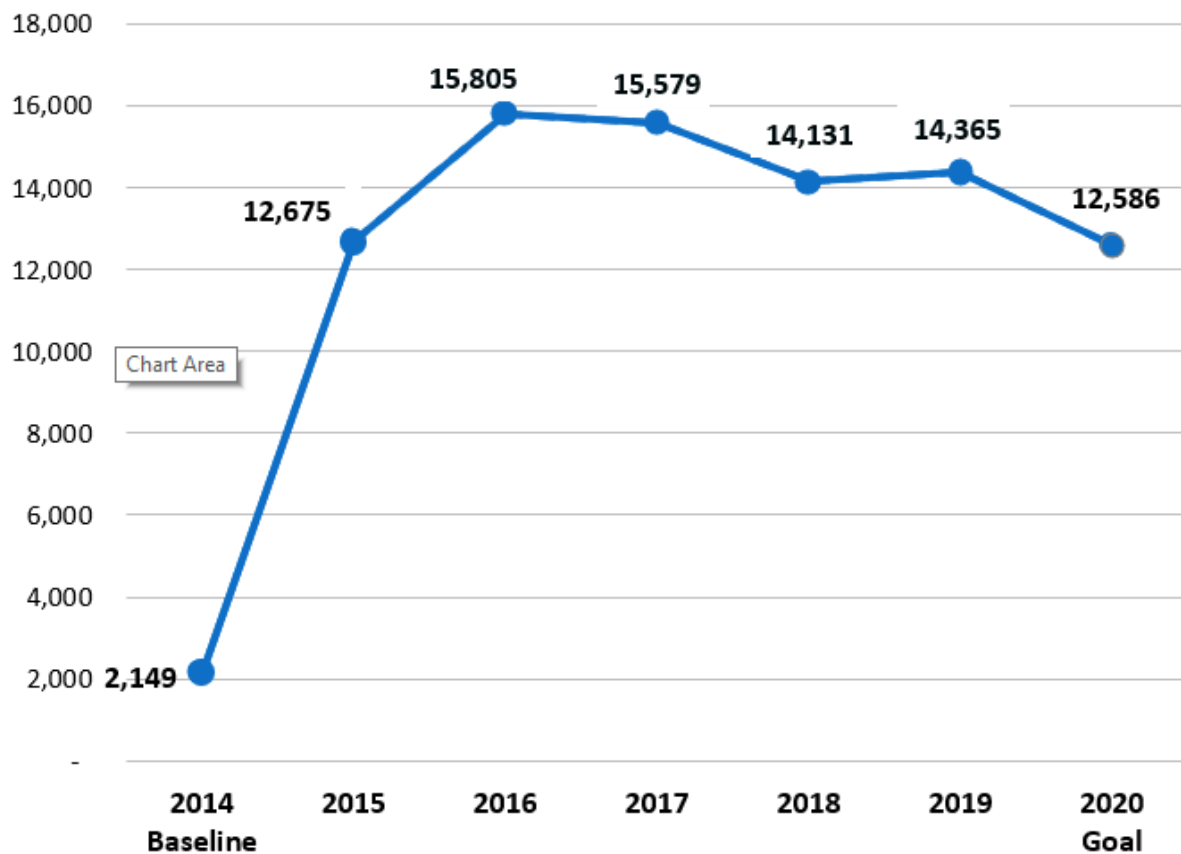
Average Earnings:

- Credit \$45,483.78
- Workforce \$50,093.22

Research Report

An analysis conducted by Old Dominion University of 9,452 individuals who earned short-term credentials with LCTCS indicated immediate labor market returns of \$6,715.81 (+19%).

GOAL 3: QUADRUPLE TRANSFER STUDENTS



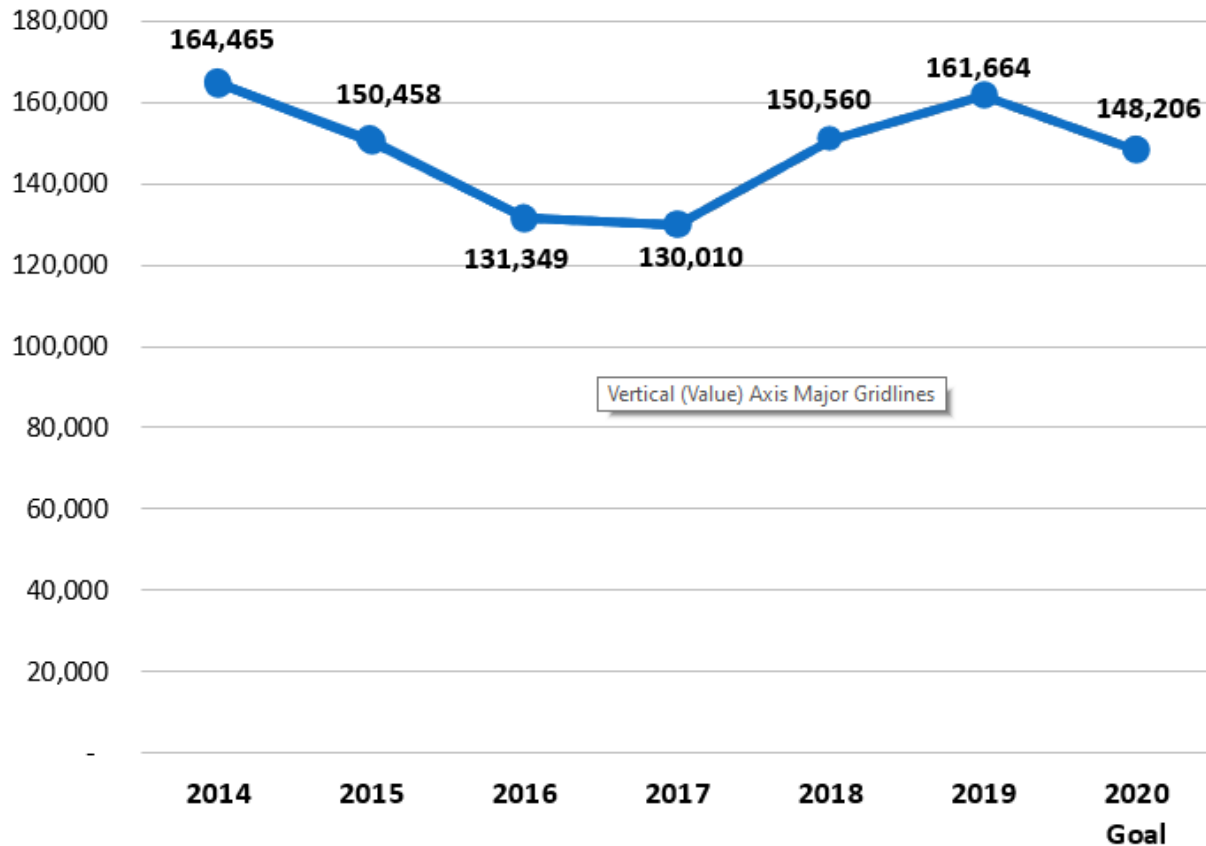
Quick Facts

UL System	7,258
LSU System	2,120
SU System	567
LAICU	586
In-State Proprietary	69
Out-of-State Public	618
Out-of-State Private	1,355

Top Ten

SLU	2,258
ULL	1,505
LSU	1,439
UNO	703
Northwestern	694
Nicholls	602
La Tech	549
ULM	456
SUBR	406
McNeese	364
LSUS	319

GOAL 4: DOUBLE STUDENTS SERVED



Quick Facts

- 86,860 credit students (+8%)
- 40,958 workforce (+3%)
- 36,327 WorkReady U (-13%)

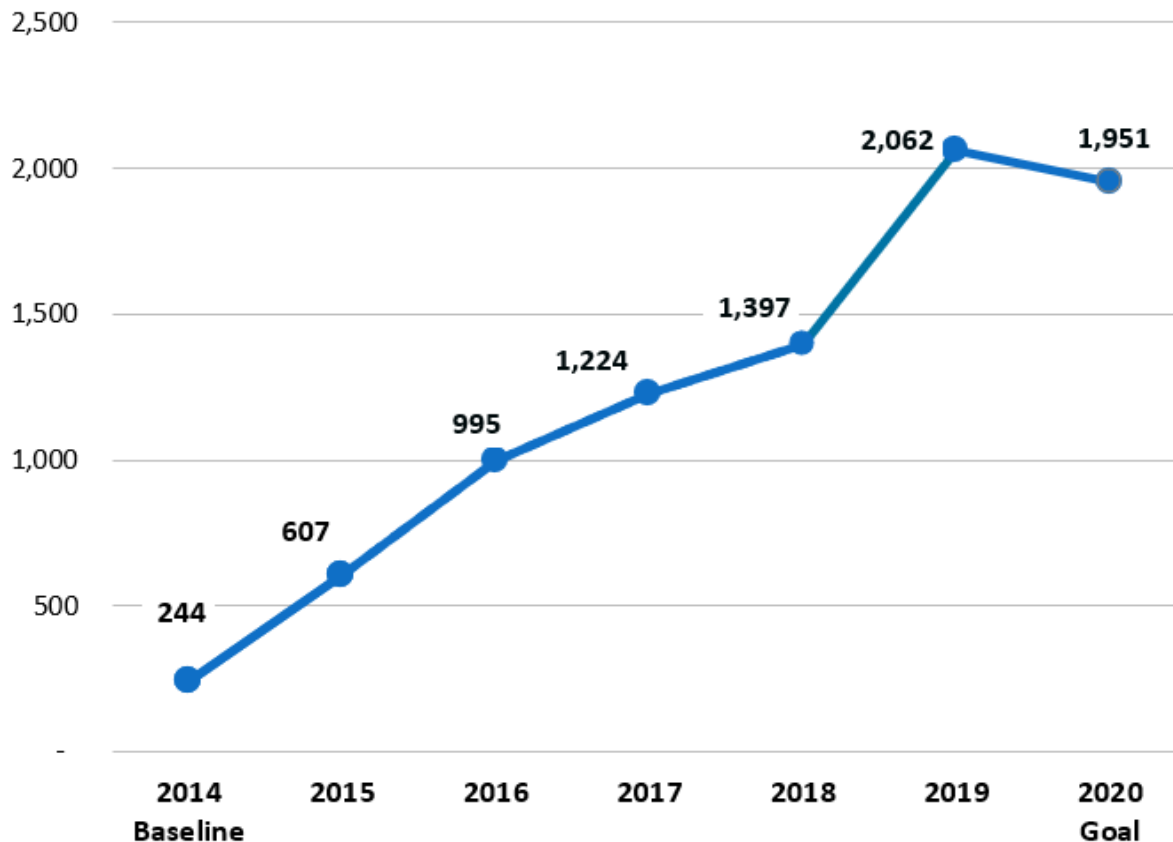
2019 Report

- 80,608 credit students
- 39,959 workforce
- 41,664 WorkReady U

2018 Report

- 82,488 credit students
- 33,951 workforce
- 42,078 WorkReady U

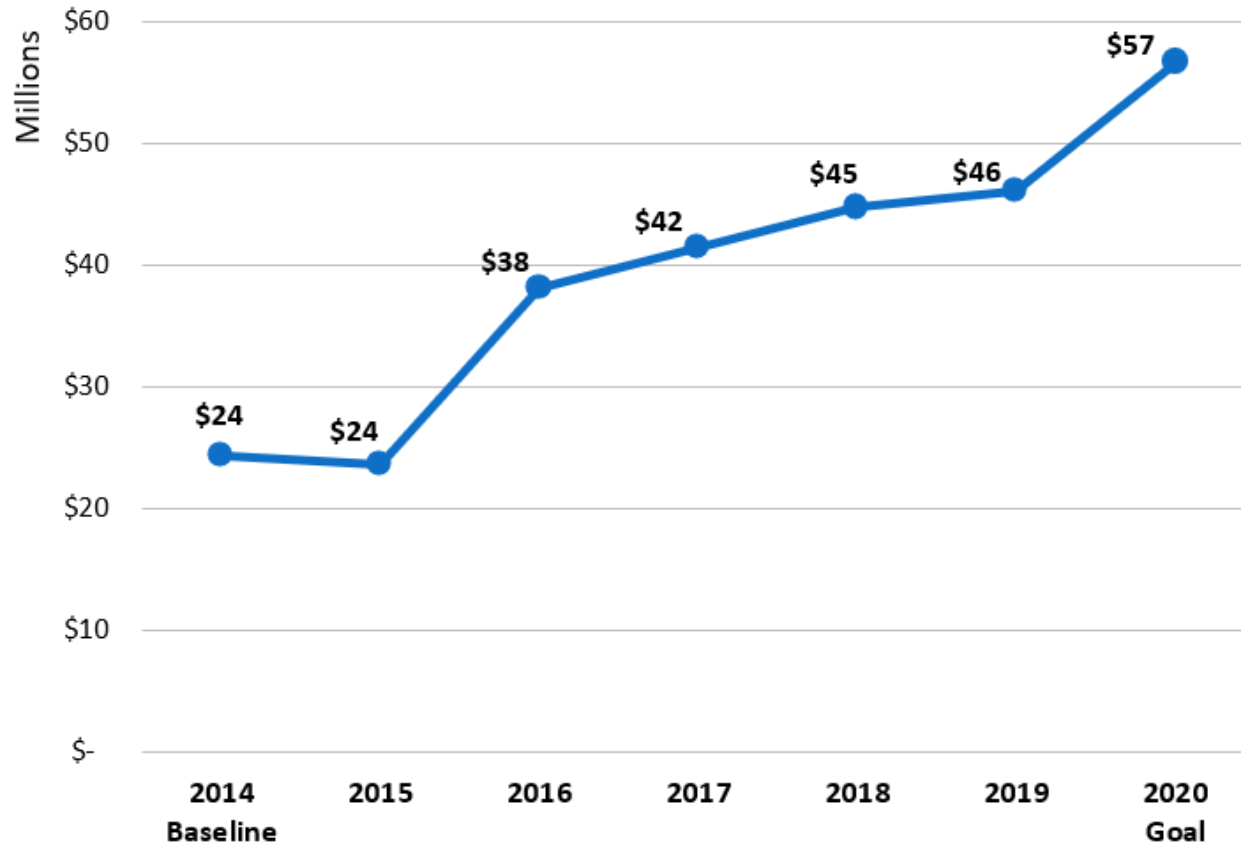
GOAL 5: QUADRUPLE PARTNERSHIP



Quick Facts

- Over 40 multi-institution partners:
 - Serves on an advisory committee
 - Hires graduates
 - Donates resources
 - Provides scholarships
 - Provides internship opportunities
 - Engages in contract training
 - Assists with new program creation
 - Other

GOAL 6: DOUBLE FOUNDATIONAL ASSETS



Quick Facts

- Exceeded target by \$6.7M
- 35% Growth in Endowments from Baseline Year
- 50% Growth in Louisiana Based Donors (Louisiana owned & operated businesses)
- Greater support from statewide organizations: Healthy Blue Louisiana, Louisiana Construction Council, Louisiana Motor Transport Association, LHC Group, Acadian Ambulance, DOW Chemical

OUR LOUISIANA 2020

Goal	Baseline	Target	2020
Double Graduates	19,810	40,000	33,428
Double Earnings	\$723M	\$1.5B	\$1.58B
Quadruple Transfers	2,149	10,000	12,586
Double Students Served	164,465	325,000	148,206
Quadruple Partnerships	244	1,000	1,949
Double Assets	\$24M	\$50M	\$56.7M

OUR LOUISIANA 2020

BUILDING THE WORKFORCE OF TOMORROW



OUR GOALS

- Double graduates to 40,000 annually
- Double earnings of an annual graduating class to \$1.5 Billion
- Quadruple student transfers to universities to 10,000 annually
- Double students served to 325,000 annually
- Quadruple partnerships with businesses to 1,000 annually
- Double foundation assets to \$50 million

